

The Viega hotel bathroom planner

Hospitality begins in
the bathroom.



viega

CONTENTS

4

Introduction to the world of bathroom systems.

6

Viega pre-wall technology: WCs and washbasin elements.

22

Visign flush plates.

34

Visign urinal flush plates.

38

Viega Advantix and Cleviva shower channels.

60

Viega Advantix bathroom drains and odour traps.

70

Viega Eleganta: drainage technology.

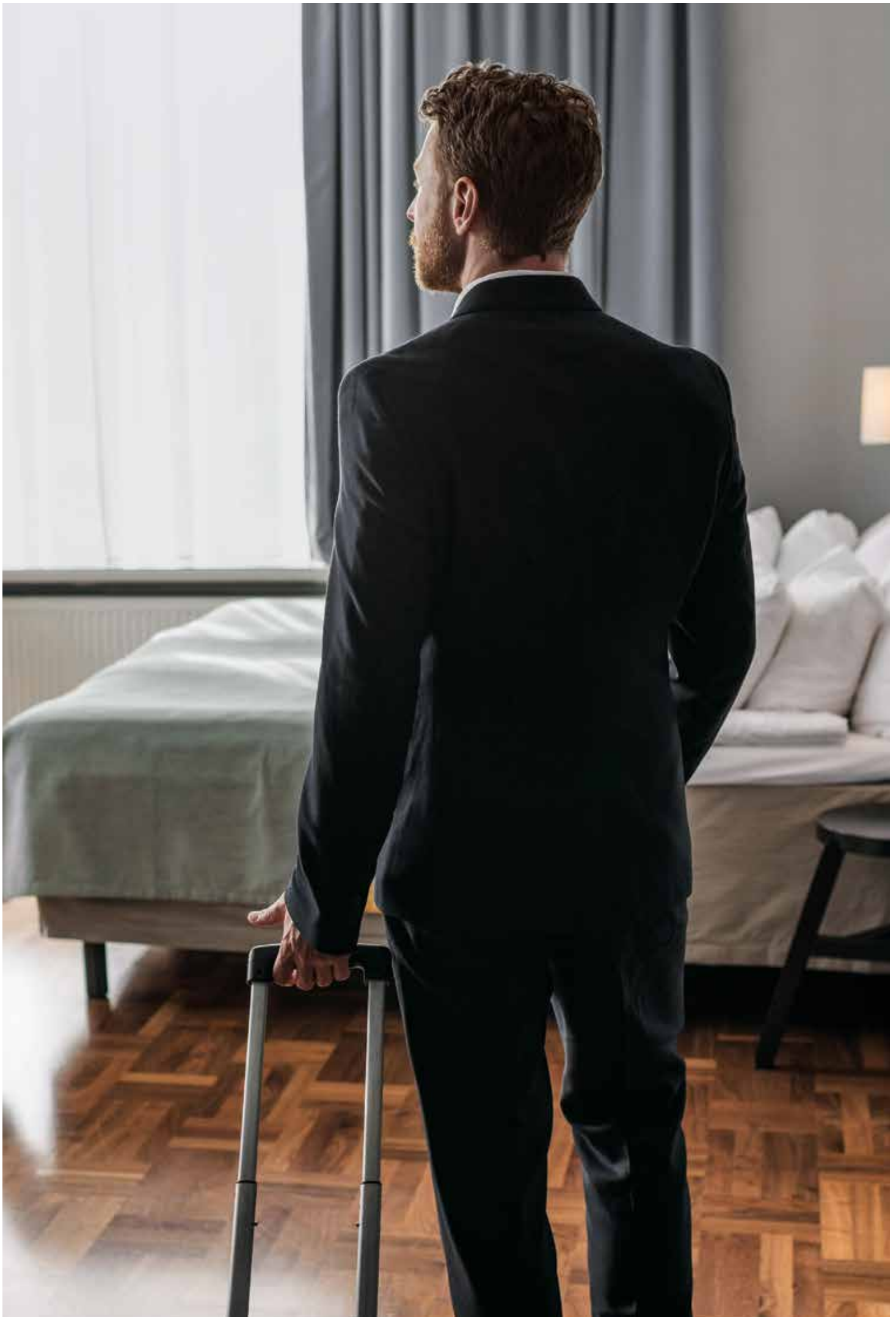
80

Viega drainage technology for bath tubs and shower trays.

100

Colours and materials.





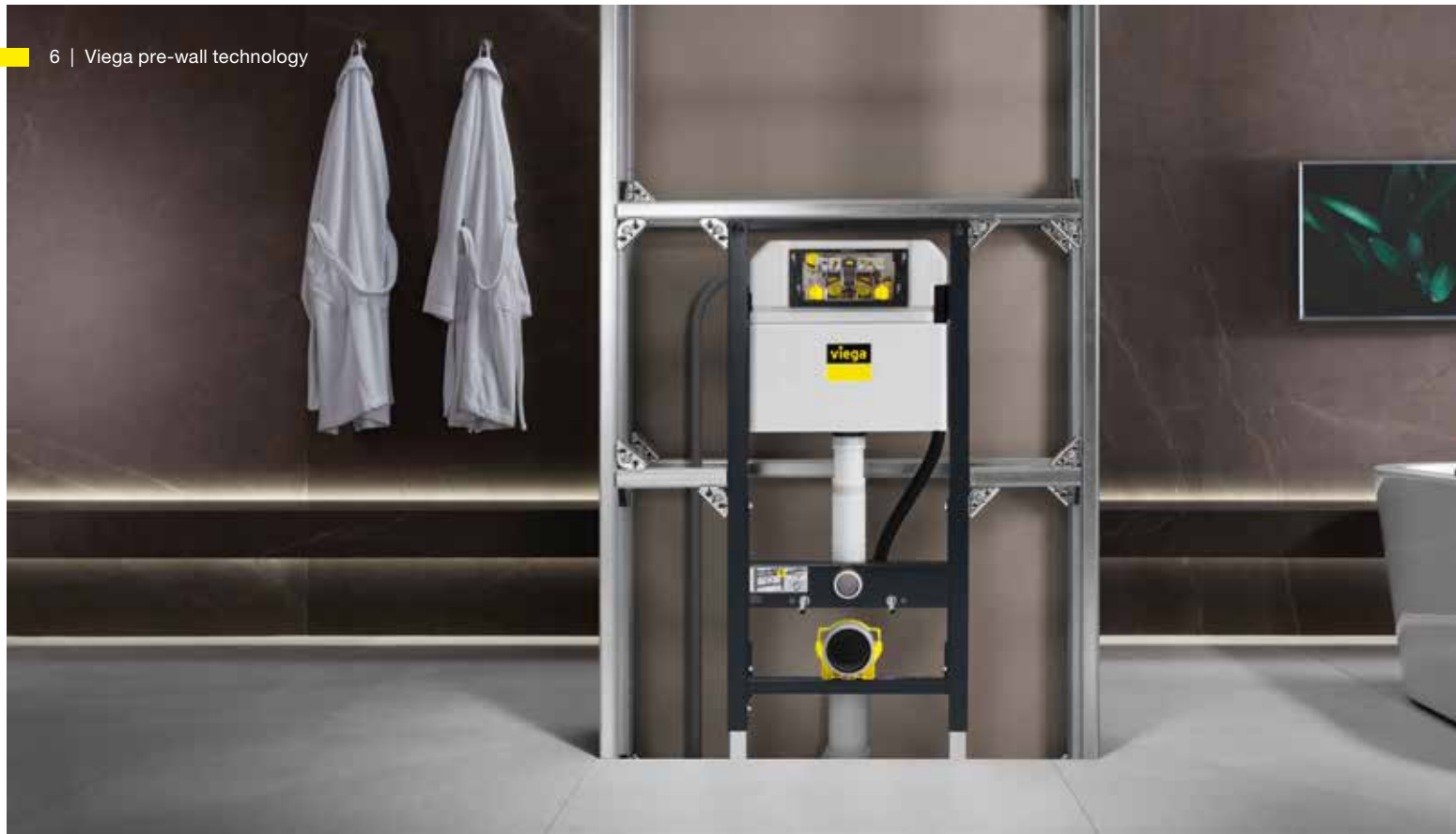


VIEGA CREATES LIVING SPACES. FOR GUESTS WHO WILL WANT TO RETURN.

No matter what room design you choose as a hotelier – with Viega you have a reliable partner by your side, whose hotel bathroom systems combine the very best quality and innovation with outstanding design which is outstandingly easy to use. Viega provides infrastructure for the most important area in a hotel – namely,

where water flows and is used. This is where over 120 years of expertise come into play, ensuring the best drinking water quality, innovative technology, safe fire and sound insulation, as well as a comprehensive service. Every Viega system upgrades your hotel project, regardless of the size, focus or category and will

guarantee that guests want to spend their time with you – and come back again. Come to Viega and receive individual advice about how to manage your hotel. We will support you in running your hotel in a cost effective, environmentally friendly way.





Viega Prevista

PRE-WALL TECHNOLOGY



Viega Prevista pre-wall system

FOR PLANNING INDIVIDUAL BUILDINGS: A NEW GENERATION OF PRE-WALL TECHNOLOGY.

Whether in dry or wet construction, with the Viega Prevista pre-wall system, hotel planners can create any bathroom they want and adapt it to the individual needs of potential guests. All WC elements have identical flushing systems, are height adjustable and shower-toilet ready as standard, and they are extremely quick to install.

Thanks to the Prevista Dry Plus flexible rail system, designing and planning any bathroom landscape is possible – whether it's ultra-compact in single rooms or spacious and luxurious in suites or apartments. Special set-ups for accessible use are also viable, for example individual height adjustability of WC seats and washbasins.

Protection against legionella

In addition to maximum flexibility, Viega Prevista also offers the option to effectively preserve drinking water quality: for example, using the Viega Prevista WC element with integrated flushing function, as well as hot and cold water connection, or the electronic flush plates with hygiene function. From the outset, this prevents problems in potable water lines in the event of longer periods out of use. Discover more about potable water quality here:

[viega.com/Drinking-water](https://www.viega.com/Drinking-water)



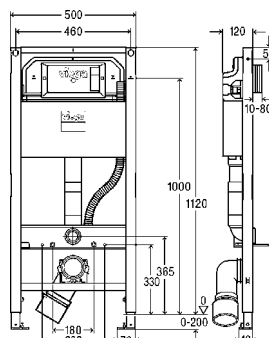
Prevista Dry

The Prevista Dry WC, washbasin and urinal elements can also be mounted directly on the wall or in the studding – meaning they are always in line with your planning.

**Convenient, cost-effective and safe**

Thanks to the integrated flushing throttle, rimless ceramics can also be installed with Viega Prevista. Highly secure water connections are also included, which help to prevent leaks. The one-piece cistern is a further safety feature. Once installed, the Viega Prevista pre-wall system only draws attention because of how convenient it is. That is just as certain is its sparing use of valuable water. In addition to the 4-star WELL label for the home sector, Prevista flush cisterns are unique in the industry in having the 6-star WELL label for public facilities.

Prevista Dry Pre-wall/flushing technology

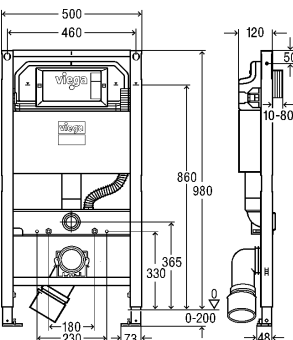


Prevista Dry WC element with shower WC connection, 1120 mm

compatible with all WC flush plates for Prevista, integration in Prevista Dry Plus, dual flush technology, barrier-free

Technical data
partial flush volume factory setting approx. 3 l
partial flush volume setting range approx. 2–4 l
full flush volume factory setting approx. 6 l
Large flush volume setting range approx. 3.5–7.5 l

article 804 190 Model 8522.38

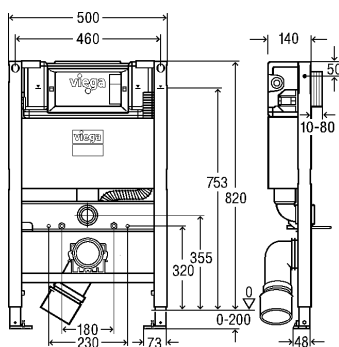


Prevista Dry-WC element with shower WC connection, 980 mm

compatible with all WC flush plates for Prevista, integration in Prevista Dry Plus, dual flush technology, barrier-free

Technical data
partial flush volume factory setting approx. 3 l
partial flush volume setting range approx. 2–4 l
full flush volume factory setting approx. 6 l
Large flush volume setting range approx. 3.5–7.5 l

article 804 206 Model 8530.38

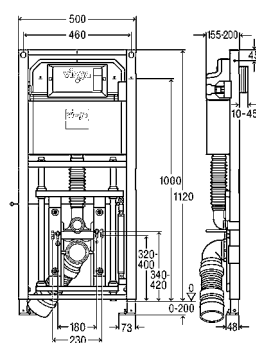


Prevista Dry WC element with shower WC connection

compatible with all WC flush plates for Prevista, integration in Prevista Dry Plus, dual flush technology, flush actuation from front or top, barrier-free

partial flush volume factory setting approx. 3 l
partial flush volume setting range approx. 2–4 l
full flush volume factory setting approx. 6 l
Large flush volume setting range approx. 3.5–7.5 l

article 804 213 Model 8533.38



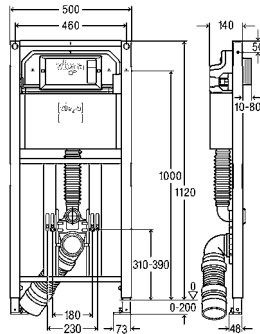
Prevista Dry WC element ceramic height individually adjustable at the touch of a button by the user, 1120 mm

compatible with all WC flush plates for Prevista, integration in Prevista Dry Plus, ceramic height individually adjustable at the touch of a button by the user, dual flush technology, barrier-free

without: cover plate

Technical data
Small flush volume setting range approx. 2–4 l
Large flush volume setting range approx. 3.5–7.5 l

article 772 024 Model 8521.32



Prevista Dry WC element

ceramic height subsequently height-adjustable by the installer, 1120 mm

compatible with all WC flush plates for Prevista, integration in Prevista Dry Plus, dual flush technology, barrier-free

without: cover plate

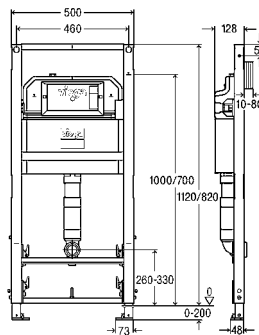
Technical data

Small flush volume setting range approx. 2–4 l

Large flush volume setting range approx. 3.5–7.5 l

article 772 031

Model 8522.31



Prevista Dry WC element

floor-standing WC or children's WC
1120 mm/820 mm

can be shortened from 1120 mm to 820 mm, compatible with all WC flush plates for Prevista, integration in Prevista Dry Plus, dual flush technology, barrier-free

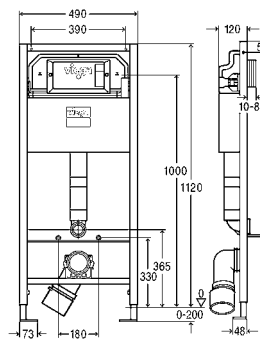
Technical data

Small flush volume setting range approx. 2–4 l

Large flush volume setting range approx. 3.5–7.5 l

article 772 048

Model 8522.33



Prevista Dry WC element

building project version
1120x490 mm

compatible with all WC flush plates for Prevista, dual flush technology

Technical data

Small flush volume factory setting approx. 3 l

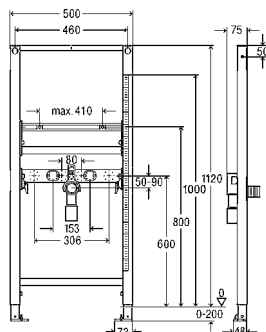
Large flush volume factory setting approx. 6 l

article 771 973

Model 8524

Prevista Dry

Pre-wall/flushing technology



Prevista Dry washbasin element

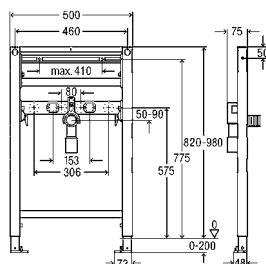
1120 mm, height-adjustable connections

for WB with single-hole fitting, for pre-wall mounting please order separately: Prevista Dry fixing set model 8570.36, steel integration in Prevista Dry Plus

article 776 183 Model 8535

with fixed connections

article 789 329 Model 8538

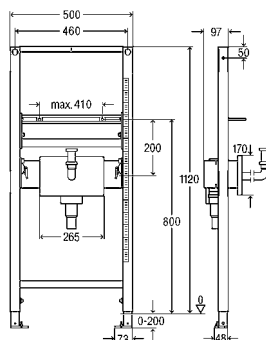


Prevista Dry washbasin element

820–980 mm

for pre-wall mounting please order separately: Prevista Dry fixing set model 8570.36, steel integration in Prevista Dry Plus without: measuring tape

article 776 190 Model 8535.31

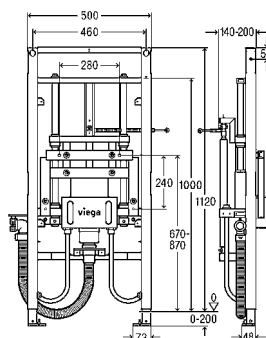


Prevista Dry washbasin element

with concealed connection box
1120 mm

for pre-wall mounting please order separately: Prevista Dry fixing set model 8570.36, steel integration in Prevista Dry Plus

article 776 206 Model 8535.33

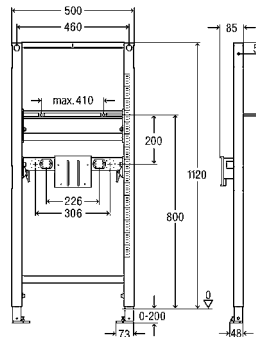


Prevista Dry washbasin element

ceramic height individually adjustable at the touch of a button by the user
1120 mm

for barrier-free washbasin with single-hole fitting, WB with single-hole fitting for pre-wall mounting please order separately: Prevista Dry fixing set model 8570.36 only use with wash basin cover plate model 8570.45, steel integration in Prevista Dry Plus, barrier-free without: cover plate

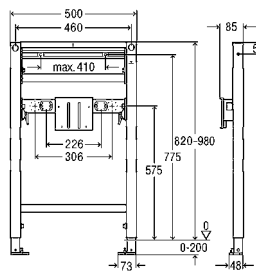
article 776 213 Model 8535.32



Prevista Dry washbasin element
barrier-free
1120 mm

for pre-wall mounting please order separately:
Prevista Dry fixing set model 8570.36, steel
integration in Prevista Dry Plus

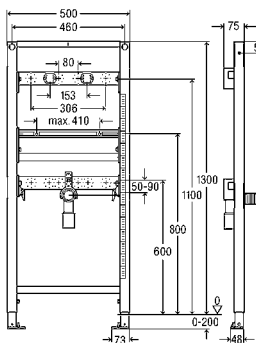
article 776 046 Model 8536



Prevista Dry washbasin element
barrier-free
820–980 mm

for pre-wall mounting please order separately:
Prevista Dry fixing set model 8570.36, steel
integration in Prevista Dry Plus

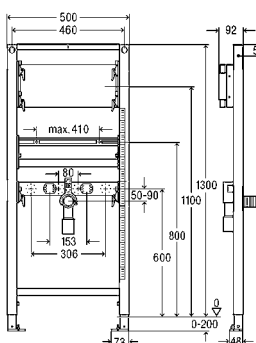
article 776 251 Model 8536.31



Prevista Dry washbasin element
for wall-mounted fitting
1300 mm

for pre-wall mounting please order separately:
Prevista Dry fixing set model 8570.36, steel
integration in Prevista Dry Plus

article 776 220 Model 8540



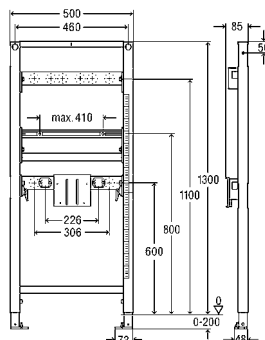
Prevista Dry washbasin element
for concealed wall-fitting
1300 mm

for pre-wall mounting please order separately:
Prevista Dry fixing set model 8570.36, steel,
wood, integration in Prevista Dry Plus

article 776 237 Model 8540.31

Prevista Dry

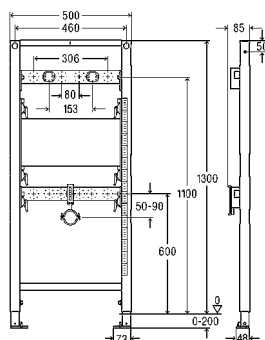
Pre-wall/flushing technology



Prevista Dry washbasin element
barrier-free, for wall-mounted fitting
1300 mm

for pre-wall mounting please order separately:
Prevista Dry fixing set model 8570.36, steel
integration in Prevista Dry Plus

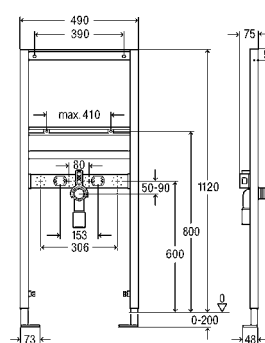
article 776 039 Model 8540.32



Prevista Dry sink basin element
1300 mm

for pre-wall mounting please order separately:
Prevista Dry fixing set model 8570.36, steel,
wood, integration in Prevista Dry Plus

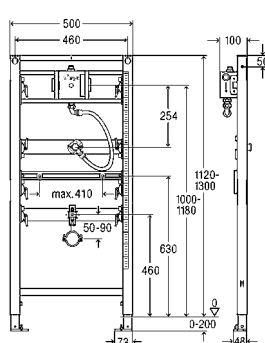
article 776 282 Model 8540.33



Prevista Dry washbasin element
building project version
1120x490 mm

for WB with single-hole fitting, not suitable for
Prevista Dry Plus, for pre-wall mounting please
order separately: fixing set model 8180.73,
steel

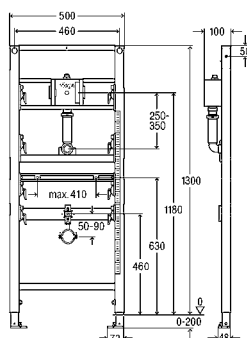
article 776 541 Model 8539



Prevista Dry urinal element
Prevista Dry urinal element
1120–1300 mm

for universal water connection, for pre-wall
mounting please order separately:
Prevista Dry fixing set model 8570.36, steel
compatible with all urinal flush plates for
Prevista, integration in Prevista Dry Plus

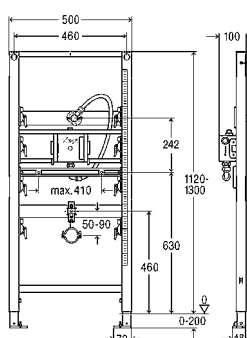
article 776 411 Model 8560.32



Prevista Dry urinal element
telescoping water connection
1300 mm

for pre-wall mounting please order separately:
Prevista Dry fixing set model 8570.36, steel
compatible with all urinal flush plates for
Prevista, integration in Prevista Dry Plus

article 776 404 Model 8560



Prevista Dry urinal element
hidden flush actuation
1120–1300 mm

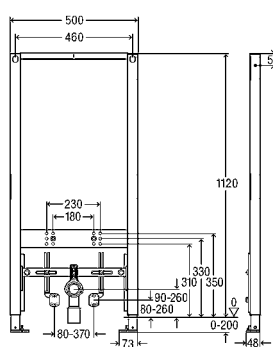
for pre-wall mounting please order separately:
Prevista Dry fixing set model 8570.36
suitable for equipment set model 8560.33
steel, integration in Prevista Dry Plus

article 776 428 Model 8560.31

Equipment set
hidden flush actuation

for urinal with concealed flushing system
suitable for Prevista Dry urinal element
model 8560.31

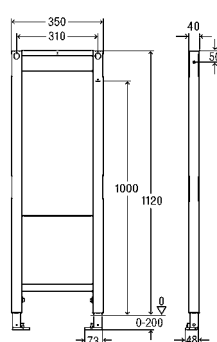
article 785 956 Model 8560.33



Prevista Dry bidet element
1120 mm

for wall-hung bidet
for pre-wall mounting please order separately:
Prevista Dry fixing set model 8570.36, steel
integration in Prevista Dry Plus

article 776 442 Model 8568

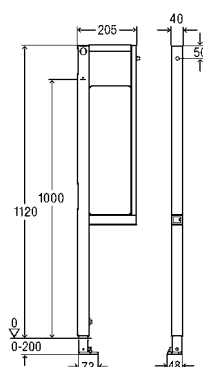


Prevista Dry fixing element
for support hinged handles
1120 mm

for sanitary objects, barrier-free pre-wall
installation, for pre-wall mounting please order
separately: Prevista Dry fixing set
model 8570.36
steel, wood, integration in Prevista Dry Plus

article 776 497 Model 8570.31

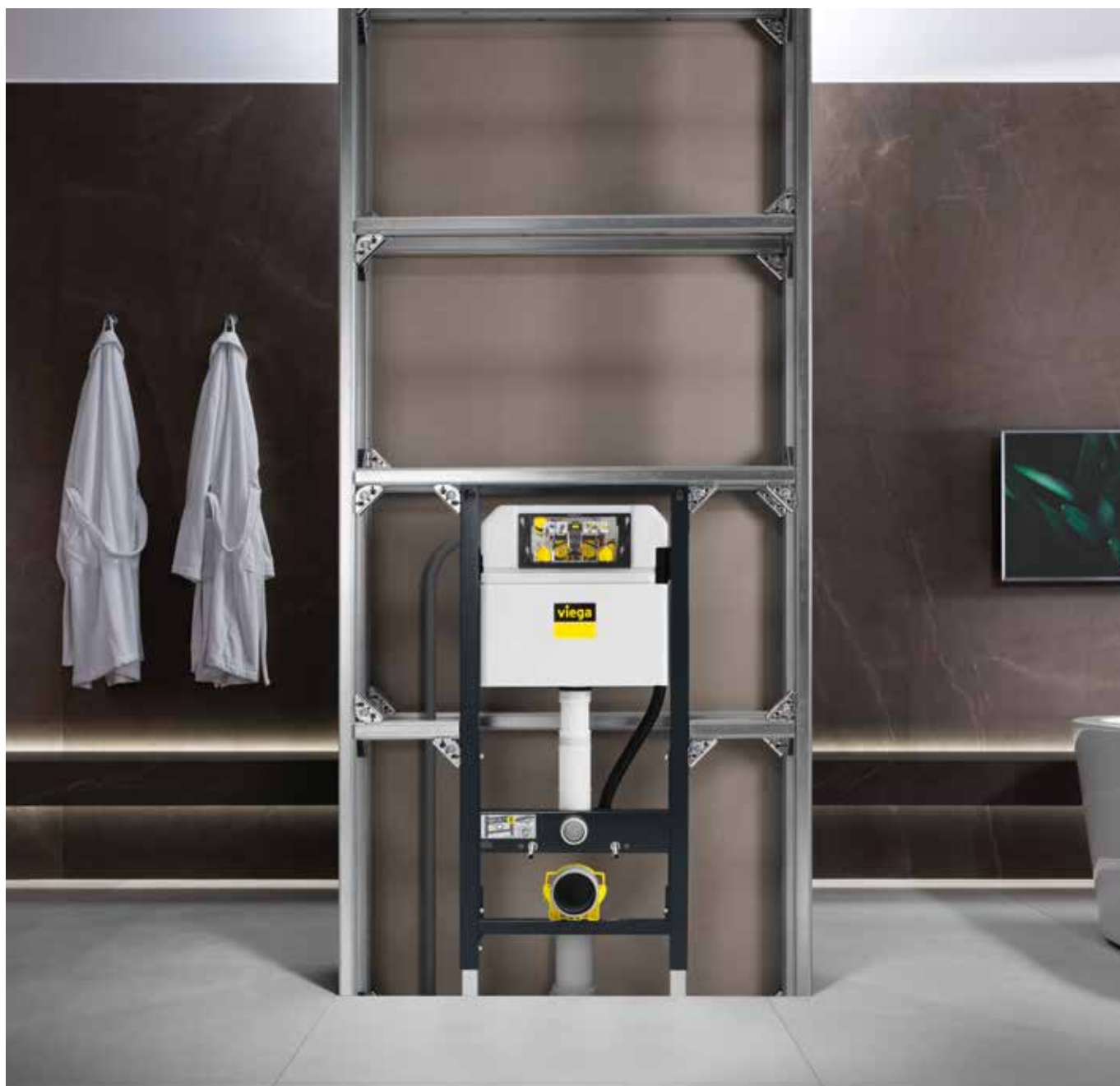
Prevista Dry Pre-wall/flushing technology



Prevista Dry fixing element for support hinged handles 1120 mm

for mounting on Prevista Dry element with CH 1120 mm, sanitary objects, barrier-free pre-wall installation, for pre-wall mounting please order separately: Prevista Dry fixing set model 8570.36 steel, wood, integration in Prevista Dry Plus

article	left	776 473	Model 8570.32
article	right	776 480	Model 8570.32



Prevista Dry Plus

Pre-wall/flushing technology



Prevista Dry Plus mounting rail

- for partially room-high and room-high pre-wall and partition wall construction
- galvanised steel
- continuously pre-punched long hole every 30 cm for mounting to the wall and floor or ceiling

L = 5000 mm H = 40 mm
T = 40 mm PU = 4

article 471 781 Model 8401

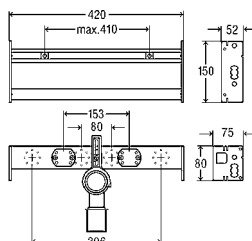


Prevista Dry Plus complete package

- for building of a partially room-high or room-high partition or pre-wall construction

A [m²]	PU	article
1	114	471 545
3	54	471 750
5	54	471 767
10	45	471 774

Model 8400

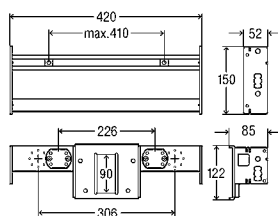
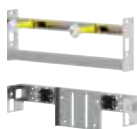


Prevista Dry Plus washbasin module

- for WB with single-hole fitting
- steel

W = 420 MM PU = 1/40

article 776 299 Model 8545

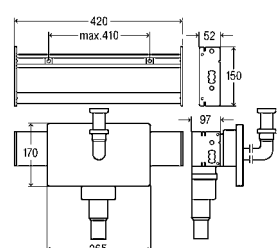


Prevista Dry Plus washbasin module barrier-free

- for WB with single-hole fitting
- steel

W = 420 MM PU = 1

article 776 305 Model 8545.31



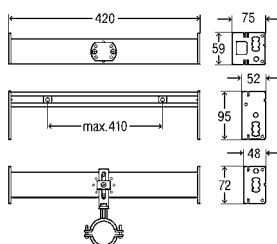
Prevista Dry Plus washbasin module with concealed connection box

- for WB with single-hole fitting
- steel

article 776 312 Model 8545.32

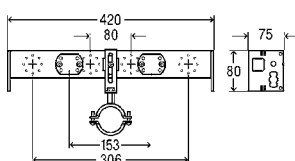
Prevista Dry Plus

Pre-wall/flushing technology



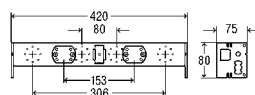
Prevista Dry Plus urinal module
for wall-mounted flushing valve
■ steel

article 776 435 Model 8565



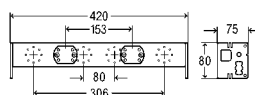
Prevista Dry Plus fitting holder
for sink
■ steel

article 776 329 Model 8555



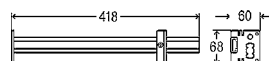
Prevista Dry Plus fitting holder
for wall-mounted fitting
■ steel

article 776 558 Model 8558



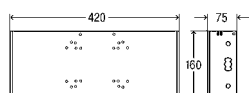
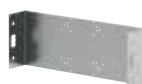
Prevista Dry Plus fitting holder
for wall-mounted fitting
reinforced
■ steel

article 776 336 Model 8555.31



Prevista Dry Plus fitting holder
for wall-mounted fitting
width-adjustable
■ steel

article 776 350 Model 8555.33



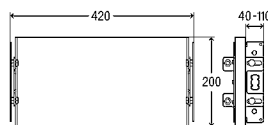
Prevista Dry Plus fitting holder
for concealed fitting
■ steel

article 776 367 Model 8555.34



Prevista Dry Plus fitting holder
for concealed valve
width-adjustable
■ steel

article 776 343 Model 8555.32

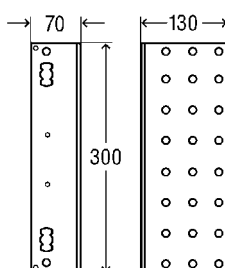
**Prevista Dry Plus fitting holder**

for concealed fitting
depth-adjustable

- for concealed fitting, concealed shut-off valve, concealed domestic water meter unit
- steel, wood
- setting range 40–110 mm

article 776 374

Model 8555.38

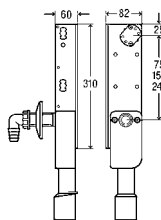
**Prevista Dry Plus fitting holder**

for concealed fitting

- for 2 concealed valves or water meter with 1 concealed valve
- steel

article 776 381

Model 8555.35

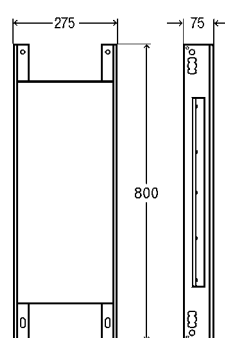
**Prevista Dry Plus fitting holder**

for washing machine connection

- steel

article 776 398

Model 8555.36

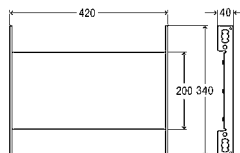
**Prevista Dry Plus fixing element**

for support hinged handles

- steel, wood
- waterproof

article 776 527

Model 8570.34

**Prevista Dry Plus fixing element**

for sanitary objects

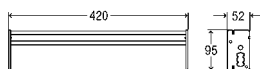
- steel, wood
- waterproof

article 776 510

Model 8570.30

Prevista Dry Plus

Pre-wall/flushing technology

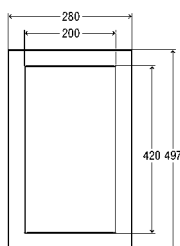


Prevista Dry Plus fixing rail

for heavy loads

- for hot water tank, pipelines in self-supporting installation shafts
- steel

article 776 534 Model 8570.35



Prevista Dry Plus plywood panel

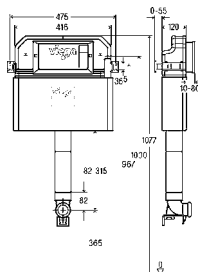
for sanitary objects, for support hinged handles

- waterproof

article 776 503 Model 8570.33

Prevista Pure

Pre-wall/flushing technology (for drywalls)



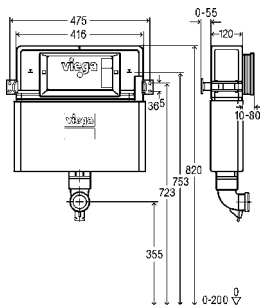
Concealed cistern 3H

- for floor-standing WC, immurement and encircling wall
- compatible with all WC flush plates for Prevista, flush actuation from front, dual flush technology

Technical data

partial flush volume factory setting approx. 3 l
partial flush volume setting range approx. 2–4 l
full flush volume factory setting approx. 6 l
Large flush volume setting range approx. 3.5–7.5 l

article 804 657 Model 8502.38



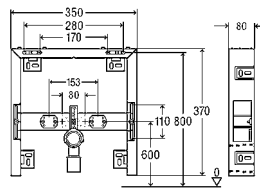
Concealed cistern 3L

- for floor-standing WC, immurement and encircling wall
- compatible with all WC flush plates for Prevista, flush actuation from front or top, dual flush technology

Technical data

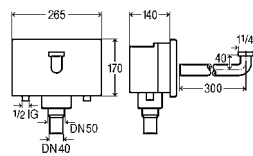
partial flush volume factory setting approx. 3 l
partial flush volume setting range approx. 2–4 l
full flush volume factory setting approx. 6 l
Large flush volume setting range approx. 3.5–7.5 l

article 804 664 Model 8504.38

**Prevista Pure washbasin block**

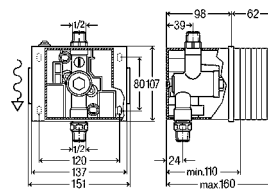
- for WB with single-hole fitting, immurement and encircling wall
- steel

article 776 596 Model 8550

**Concealed connection box**

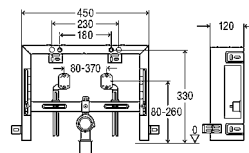
- for WB with single-hole fitting, wet construction installation
- plastic

article 734 817 Model 8314

**Prevista Pure urinal water path**

- for urinal with concealed flushing system, urinal flush plates for Prevista (manual and touchless flush actuation)

article 785 994 Model 8566

**Prevista Pure bidet block**

- for wall-hung bidet, immurement and encircling wall
- steel

article 776 602 Model 8569





Viega Visign

FLUSH PLATES



Viega Vision WC flush plates

DESIGN THAT OPENS UP NEW BOUNDARIES: CREATIVELY AND FINANCIALLY.

Viega Vision flush plates do more than just enhance any room. Thanks to our extensive portfolio, drafting and implementing themes and design worlds is a breeze. Rooms can also be appropriately adjusted in terms of pricing. This means that top-end suites can be facilitated and upgraded with the luxurious Vision for More actuator plates, while less expensive rooms feature the cost-effective Vision for Style plates, which still impress in terms of design and hygiene.

Both lines can always be relied upon to integrate maximum mechanical reliability and, where the flush plates are contactless, maximum hygiene. And even better? All our flush plates are compatible with the our cisterns. This means the design can be quickly altered and it is possible to decide on a flush plate at the last moment. An overview of the flush plate materials and colours we supply can be found in the final pages of this brochure.



To simplify your decision, simply use the online **flush plate configurator**:



[viega.com/
Configurators](https://viega.com/Configurators)



Let there be light

Some of our flush plates can be equipped with a pleasant LED ambient light by means of an additional component, making it easier for hotel guests to navigate unfamiliar bathrooms in the dark.



Minimal aesthetic impact

The Visign flush plate design range makes it possible to minimise the aesthetic impact, with installation that is flush with the tiling.



Because water is vital

The dual flush technology saves water efficiently, by controlling the flush volume. The WELL label confirms this, with the maximum six star rating.



Flush from afar

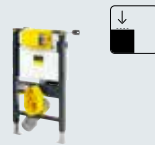
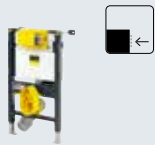
Why not make things even more convenient? Remote control flush plates do just that, and can be mounted on bathroom furniture or walls.



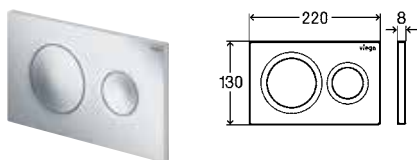
Beautiful and clean

Viega does not just provide contactless flush plates, ideally suited to all areas; a concealed flushing technique with no flush plate is also available, which can be tailored to the respective application.

Combination overview: WC elements and blocks in combination with flush plates and accessories



S1 Prevista Dry			8522.38/8530.38	8533.38	8533.38	8655.11
S3 Prevista Pure*			8502.38	8504.38	8504.38	
Visign for Life	8601.1		■	■	■	
	8602.1		■	■	■	
Visign for Style	8610.1		■	■	■	
	8611.1		■	■	■	
	8613.1		■	■	■	
	8614.1		■	■	■	
Visign for More	8620.1		■	■		
	8621.1		■	■	■	■
	8622.1		■	■		■
	8624.1		■	■	■	■
Visign for Style sensitive 8615.1			■	■	■	■
Visign for More sensitive 8625.1			■	■		■
	8651.1		■* only for dry construction	■* only for dry construction	■* only for dry construction	
	8650.1		■	■		
	8653.1		■	■		

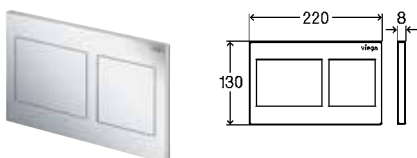


WC flush plate for Prevista Visign for Style 20

■ manual flush actuation from front or top, dual flush technology

	Cover plate	Actuator	PU	article
	alpine white plastic	alpine white plastic	1	773 793
NEW	plastic black matt	plastic black matt	1	796 389
	chrome matt plastic	chrome matt plastic	1	773 786
	chrome-plated plastic	chrome-plated plastic	1	773 779

Model 8610.1

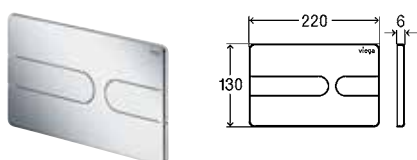


WC flush plate for Prevista Visign for Style 21

■ manual flush actuation from front or top, dual flush technology

	Cover plate	Actuator	PU	article
	alpine white plastic	alpine white plastic	1	773 250
	chrome matt plastic	chrome matt plastic	1	773 243
	chrome-plated plastic	chrome-plated plastic	1	773 236
NEW	plastic black matt	plastic black matt	1	801 724

Model 8611.1



WC flush plate for Prevista Visign for Style 23

■ plastic

■ manual flush actuation from front or top, dual flush technology

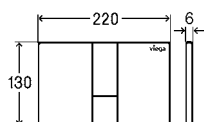
	Cover plate	Actuator	PU	article
	alpine white plastic	alpine white plastic	1	773 151
	chrome matt plastic	chrome matt plastic	1	773 069
	chrome-plated plastic	chrome-plated plastic	1	773 052
NEW	plastic black matt	plastic black matt	1	801 731
	plastic polished black	plastic polished black	1	773 175
	plastic stainless steel	plastic stainless steel	1	773 168
	coloured brushed	coloured brushed		
	acrylic shiny black	plastic black matt	1	773 199
	acrylic shiny black	plastic stainless steel	1	773 182
	coloured brushed			
	plastic special colour	plastic special colour	1	773 205¹
	plastic metallic colour	plastic metallic colour	1	773 212¹
	gold-plated plastic	gold-plated plastic	1	773 229²

Model 8613.1



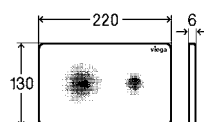
¹⁾ Delivery time for customer-individual range: 8 weeks plus shipping; non-returnable!

²⁾ Delivery time for customer-individual range: 10 weeks plus shipping; non-returnable!

**WC flush plate for Previsa****Visign for Style 24**

- for all Previsa concealed cisterns
- plastic
- manual flush actuation from front or top, dual flush technology

	Cover plate	Actuator	PU	article
	alpine white plastic	alpine white plastic	1	773 281
	chrome matt plastic	chrome matt plastic	1	773 274
	chrome-plated plastic	chrome-plated plastic	1	773 267
NEW	plastic black matt	plastic black matt	1	801 748
	plastic polished black	plastic polished black	1	773 304
	plastic stainless steel coloured brushed	plastic stainless steel coloured brushed	1	773 298
	acrylic shiny black	plastic black matt	1	773 311
	acrylic shiny black	plastic stainless steel coloured brushed	1	773 328
	plastic special colour	plastic special colour	1	773 335¹
	plastic metallic colour	plastic metallic colour	1	773 342¹
	gold-plated plastic	gold-plated plastic		773 359²

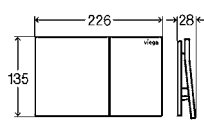
Model 8614.1**WC flush plate for Previsa****Visign for Style 25**

sensitive

- for all Previsa concealed cisterns
- only use with accessory set model 8655.11
- plastic
- printed with noctilucent finish
- touchless flush actuation from front or top, dual flush technology, with Viega Hygiene+ technology

Cover plate = alpine white plastic

PU = 1

article **774 356****Model 8615.1****WC flush plate for Previsa****Visign for More 200**

- for all Previsa concealed cisterns
- metal, glas, wood
- manual flush actuation from front, dual flush technology

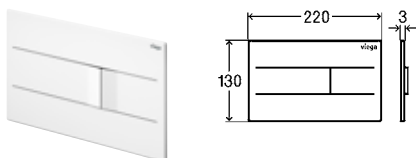
DESIGN **PLUS**
powered by: ISHDESIGN **PLUS**
powered by: ISH

	Cover plate	Actuator	PU	article
	jet black plastic	metal copper/ gold-coloured matt	1	773 601
	jet black plastic	metal anthracite	1	773 595
	chrome-plated plastic	glass black	1	773 588
	chrome-plated plastic	glass white	1	773 571
	jet black plastic	wood stained oak	1	773 564
	jet black plastic	metal special colour	1	773 618¹
	jet black plastic	metal metallic colour	1	773 625¹
	jet black plastic	gold-plated metal	1	773 632²

Model 8620.1

¹⁾ Delivery time for customer-individual range: 8 weeks plus shipping; non-returnable!

²⁾ Delivery time for customer-individual range: 10 weeks plus shipping; non-returnable!



reddot design award
winner 2019

WC flush plate for Prevista

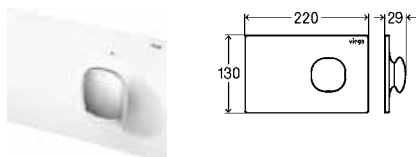
Visign for More 201

electronic

- for all Prevista concealed cisterns
- in addition optional available WC installation frame for Prevista model 8650.1
- only use with accessory set model 8655.11
- stainless steel
- manual flush actuation from front or top, dual flush technology, with Viega Hygiene+ technology

Cover plate	Actuator	PU	article
brushed stainless steel	brushed stainless steel	1	773 526
stainless steel black matt	stainless steel black matt	1	773 519
traffic white stainless steel	traffic white stainless steel	1	773 502
stainless steel special colour	stainless steel special colour	1	773 533 ¹
stainless steel metallic colour	stainless steel metallic colour	1	773 540 ¹
gold-plated stainless steel	gold-plated stainless steel	1	773 557 ²

Model 8621.1



WC flush plate for Prevista

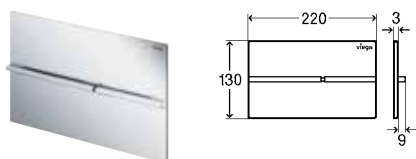
Visign for More 202

electronic, with LED lamps

- for all Prevista concealed cisterns
- only use with accessory set model 8655.11
- zinc diecasting
- manual flush actuation from front or top, dual flush technology, with Viega Hygiene+ technology

Cover plate	Actuator	PU	article
traffic white metal	traffic white metal	1	773 458
traffic white metal	chrome-plated metal	1	773 465
metal special colour	metal special colour	1	773 472 ¹
metal metallic colour	metal metallic colour	1	773 489 ¹
gold-plated metal	gold-plated metal	1	773 496 ²

Model 8622.1



reddot winner 2020



WC flush plate for Prevista

Visign for More 204

electronic

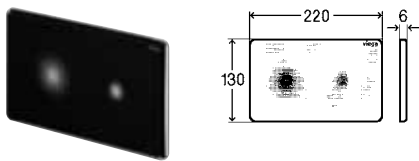
- for all Prevista concealed cisterns
- in addition optional available WC installation frame for Prevista model 8650.1
- only use with accessory set model 8655.11
- stainless steel
- manual flush actuation from front or top, dual flush technology, with Viega Hygiene+ technology

Cover plate	Actuator	PU	article
brushed stainless steel	brushed metal	1	773 663
stainless steel black matt	metal anthracite	1	773 656
chrome-plated stainless steel	chrome-plated metal	1	773 649
stainless steel black matt	brushed metal	1	773 670
stainless steel special colour	metal special colour	1	773 687 ¹
stainless steel metallic colour	metal metallic colour	1	773 694 ¹
gold-plated stainless steel	gold-plated metal	1	773 700 ²

Model 8624.1

¹⁾ Delivery time for customer-individual range: 8 weeks plus shipping; non-returnable!

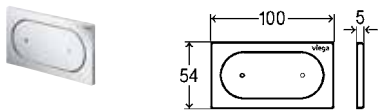
²⁾ Delivery time for customer-individual range: 10 weeks plus shipping; non-returnable!



**WC flush plate for Prevista
Visign for More 205**
sensitive, with LED lamps
■ for all Prevista concealed cisterns
■ only use with accessory set model 8655.11
■ glass
■ chrome-plated frame
■ touchless flush actuation from front or top, dual flush technology, with Viega Hygiene+ technology

Cover plate = glass black PU = 1

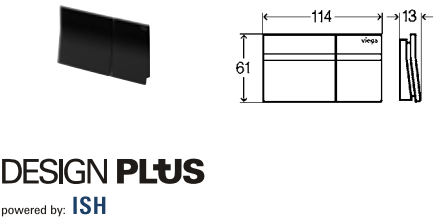
article 774 363 Model 8625.1



**WC remote actuation for Prevista
Visign for Style 23**
electronic
■ for all Prevista concealed cisterns
■ only use with accessory set model 8655.11
■ use with installation set model 8640.14
■ plastic
■ manual flush actuation, dual flush technology, with Viega Hygiene+ technology

Cover plate	Actuator	PU	article
alpine white plastic	alpine white plastic	1	773 083
chrome-plated plastic	chrome-plated plastic	1	773 076

Model 8640.1



DESIGN PLUS
powered by: **ISH**

**WC remote actuation for Prevista
Visign for More 200**
electronic
■ for all Prevista concealed cisterns
■ only use with accessory set model 8655.11
■ use with installation set model 8640.14
■ glass
■ manual flush actuation, dual flush technology, with Viega Hygiene+ technology

Actuator	PU	article
glass black	1	773 106
glass white	1	773 090

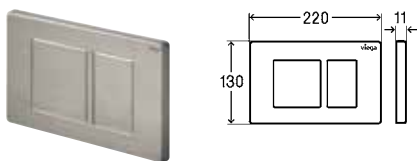
Model 8641.1



Installation set
■ for installation in wet and dry as well as pre-wall system
■ suitable for WC remote actuation for Prevista Visign for Style 23 model 8640.1, WC remote actuation for Prevista Visign for More 200 model 8641.1

PU = 1

article 789 336 Model 8640.14

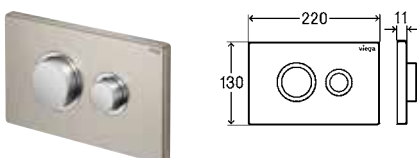
**WC flush plate for Prevista****Visign for Public 10**

- for all Prevista concealed cisterns
- stainless steel
- manual flush actuation from front or top, dual flush technology, screwable

Cover plate = brushed stainless steel

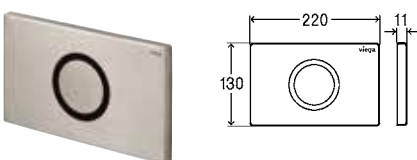
PU = 1

Actuator = brushed stainless steel

article 774 349**Model 8630.1****WC flush plate for Prevista****Visign for Public 11**

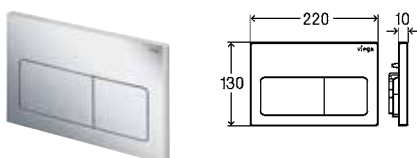
- for all Prevista concealed cisterns
- stainless steel
- manual flush actuation from front or top, dual flush technology, screwable

Cover plate	Actuator	PU	article
brushed stainless steel	polished stainless steel	1	774 325
traffic white stainless steel	traffic white stainless steel	1	774 332

Model 8631.1**WC flush plate for Prevista****Visign for Public 12**

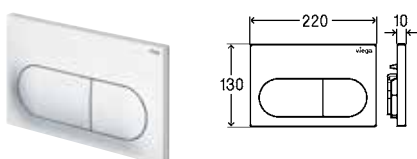
- infrared flush actuation
- for all Prevista concealed cisterns
- only use with accessory set model 8655.11
- stainless steel
- touchless infrared flush actuation from front, single flush technology, with Viega Hygiene+ technology, screwable

Cover plate	PU	article
brushed stainless steel	1	774 370
traffic white stainless steel	1	774 387

Model 8635.1**WC flush plate for Prevista****Visign for Life 5**

- for all Prevista concealed cisterns
- for revision shaft depth > 60 mm please order separately: extension set model 8570.60
- plastic
- manual flush actuation from front or top, dual flush technology

Cover plate	Actuator	PU	article
alpine white plastic	alpine white plastic	1	773 731
chrome matt plastic	chrome matt plastic	1	773 724
chrome-plated plastic	chrome-plated plastic	1	773 717

Model 8601.1**WC flush plate for Prevista****Visign for Life 6**

- for all Prevista concealed cisterns
- for revision shaft depth > 60 mm please order separately: extension set model 8570.60
- plastic
- manual flush actuation from front or top, dual flush technology

Cover plate	Actuator	PU	article
alpine white plastic	alpine white plastic	1	773 762
chrome matt plastic	chrome matt plastic	1	773 755
chrome-plated plastic	chrome-plated plastic	1	773 748

Model 8602.1

Combination overview:

WC and urinal flush plates with accessories

Illuminated WC
installation frame



8650.1

WC installation
frame, flush with tiles



8651.1

WC tablet holder



8653.1

Urinal installation
frame, flush with tiles



8651.2

Visign for Life	8601.1					
	8602.1					
Visign for Style	8610.1			■	■	
	8611.1			■	■	
	8613.1				■	
	8614.1			■	■	
Visign for More	8620.1				■	
	8621.1		■	■	■	
	8622.1			■	■	
	8624.1		■	■	■	
Visign for Style sensitive 8615.1					■	
Visign for More sensitive 8625.1					■	
Visign for Style	8610.2					■
	8611.2					■
	8613.2					
Visign for More 8620.2						■



Visign urinal flush plates

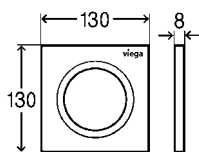
DESIGN FREEDOM FOR PRIVATE AND PUBLIC SANITARY FACILITIES.

All hotels face the challenge of having to furnish public toilet areas, such as toilets at reception or in restaurants, as well as the private areas in hotel rooms and suites. To this end, Viega does not just provide flush plates that work without contact, ideally suited to all areas; a concealed flushing technique with no flush plate is also available, which can be tailored to the respective application and functions thanks to siphon sensor technology. And those who opt for the classic WC flush plate will also find the matching counterpart for the urinal.





Urinal flush plates

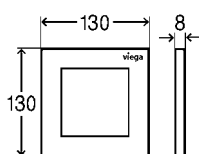


Urinal flush plate for Prevista Visign for Style 20

- for urinal flushing system
- plastic
- manual flush actuation from front

Cover plate	Actuator	PU	article
alpine white plastic	alpine white plastic	1	774 493
chrome matt plastic	chrome matt plastic	1	774 486
chrome-plated plastic	chrome-plated plastic	1	774 479

Model 8610.2

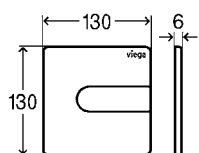


Urinal flush plate for Prevista Visign for Style 21

- for urinal flushing system
- plastic
- manual flush actuation from front

Cover plate	Actuator	PU	article
alpine white plastic	alpine white plastic	1	774 523
chrome matt plastic	chrome matt plastic	1	774 516
chrome-plated plastic	chrome-plated plastic	1	774 509

Model 8611.2

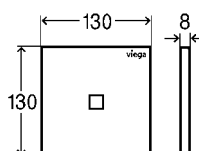


Urinal flush plate for Prevista Visign for Style 23

- for urinal flushing system
- plastic
- manual flush actuation from front

Cover plate	Actuator	PU	article
alpine white plastic	alpine white plastic	1	774 554
chrome matt plastic	chrome matt plastic	1	774 547
chrome-plated plastic	chrome-plated plastic	1	774 530
jet black plastic	jet black plastic	1	774 578
plastic stainless steel coloured brushed	plastic stainless steel coloured brushed	1	774 561
Acryl tiefblack	jet black plastic matt	1	774 592
Acryl tiefblack	plastic stainless steel coloured brushed	1	774 585

Model 8613.2

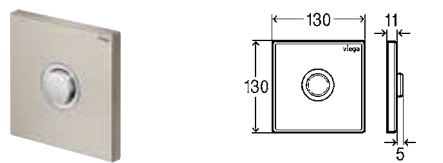


Urinal flush plate for Prevista Visign for More 200

- infrared flush actuation
- for urinal flushing system
- plastic, glas, wood
- touchless infrared flush actuation from front

Cover plate	PU	article
alpine white plastic	1	774 639
chrome-plated plastic	1	774 622
plastic stainless steel coloured brushed	1	774 646
glass black	1	774 677
glass white	1	774 660
wood stained oak	1	774 653

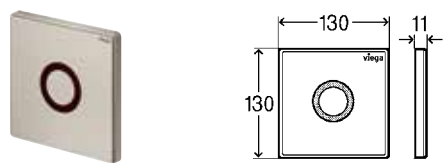
Model 8620.2



**Urinal flush plate for Prevista
Visign for Public 11**
■ for urinal flushing system
■ stainless steel
■ manual flush actuation from front

Cover plate	Actuator	PU	article
brushed stainless steel	polished stainless steel	1	774 608
traffic white stainless steel	traffic white stainless steel	1	774 615

Model 8631.2



**Urinal flush plate for Prevista
Visign for Public 12**
infrared flush actuation
■ for urinal flushing system
■ stainless steel
■ touchless infrared flush actuation from front

Cover plate	PU	article
brushed stainless steel	1	774 684
traffic white stainless steel	1	774 691

Model 8635.2



**Equipment set
hidde flush actuation**
■ for urinal with concealed flushing system
■ suitable for Prevista Dry urinal element model 8560.31

Technical data
Power supply voltage 100–240 V AC/ 50–60 Hz

article 785 956 Model 8560.33







Viega Advantix

DRAINAGE



Viega Advantix and Cleviva shower channels

UNIQUE DESIGN COMBINED WITH TIME-SAVING CLEANING.

The shower isn't just the most important part of a hotel bathroom for business travellers. As a frequently used area, it is also a calling card for every hotel. Viega shower channels mean reliable use for decades and they are a flawless design feature. As with the flush plates, showers also position hotels in particular categories.



To simplify your decision, simply use the online **shower channel configurator**:



[viega.com/
Configurators](https://www.viega.com/Configurators)

Viega Advantix Cleviva Clean in no time

Advantix Cleviva is available in multiple colours and functions both as a design aspect and a means of saving time and ensuring hygiene. Cleaning the channel profile is particularly quick and efficient. This means that not only are guests satisfied, but operational processes improve, too. The same applies to installation. Here, Advantix Cleviva makes installation significantly smoother, thanks to its factory-fitted sealing collar.





Viega Advantix

Beautifully cost effective

The frameless version of the Advantix series delivers when it comes to elegance, but also feels at home in any budget of setting. It can be combined with nine different grid designs.

Viega Advantix Vario

Endless variety

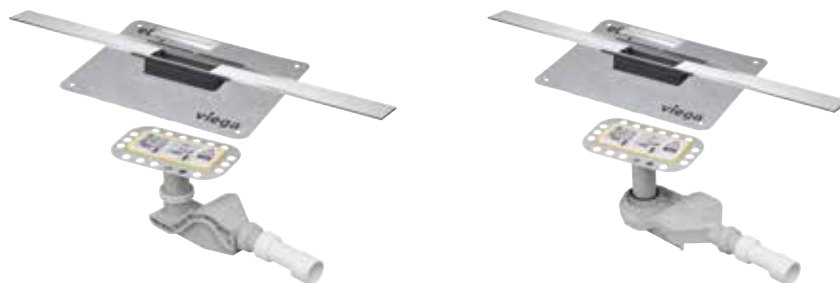
The Advantix Vario in stainless steel can either run across the space on its own or along or within the wall. It therefore allows full freedom of design, no matter whether as a straight line, or in an L or U shape. No wonder that the Advantix Vario series has won renowned design awards. Its greatest advantage, however, becomes apparent during installation and planning. Since it can be cut to length individually, the Advantix Vario adapts to any bathroom landscape.

Advantix shower channels–drainage technology

Overview of Advantix Cleviva shower channels

Complete set

4981.10
4981.11



Toolbox system

4981.80
4981.81
4981.90



4981.30 800 mm
4981.31 1000 mm
4981.32 1200 mm



4981.50 Visign C1
4981.60 Visign C2



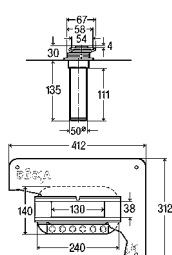
An optional noise insulation mat and the installation supports included with shower channels significantly reduce operational noise and footfall sound. This means that all Advantix drainage solutions can be installed in accordance with the noise requirements of DIN 4109 and VDI Guideline 4100.

Advantix Cleviva Design Awards:





NEW

**Advantix Cleviva shower channel drain**

vertical

- for bonded sealing (tiled shower)
- without: odour trap

Technical data

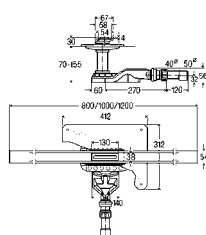
Drainage capacity accumulation height 10 mm 0.5 l/s

Drainage capacity accumulation height 20 mm 0.6 l/s

DN = 50 PU = 1

article **797 270****Model 4981.90**

NEW

**Advantix Cleviva shower channel**

with Advantix inlay Visign C1, (reconstruction model)

- for bonded sealing (tiled shower)
- not suitable for Advantix pipe lead-in fire protection R120 model 4923.5
- stainless steel 1.4301

Technical data

Water seal height 25 mm

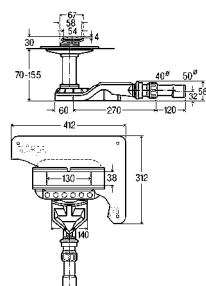
Drainage capacity accumulation height 10 mm 0.4–0.5 l/s

Drainage capacity accumulation height 20 mm 0.45–0.55 l/s

L	CH	DN	PU	article
800	70	40/50	1	794 491¹
1000	70	40/50	1	794 507¹
1200	70	40/50	1	794 514¹

¹⁾ installation height up to 155 mm possible**Model 4981.11**

NEW

**Advantix Cleviva shower channel base unit**

(reconstruction model)

- for bonded sealing (tiled shower)
- not suitable for Advantix pipe lead-in fire protection R120 model 4923.5

Technical data

Water seal height 25 mm

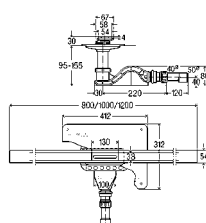
Drainage capacity accumulation height 10 mm 0.4–0.5 l/s

Drainage capacity accumulation height 20 mm 0.45–0.55 l/s

CH = 70 DN = 40/50 PU = 1

¹⁾ installation height up to 155 mm possiblearticle **794 415¹****Model 4981.81**

NEW

**Advantix Cleviva shower channel**

with Advantix inlay Visign C1

- for bonded sealing (tiled shower)
- stainless steel 1.4301

Technical data

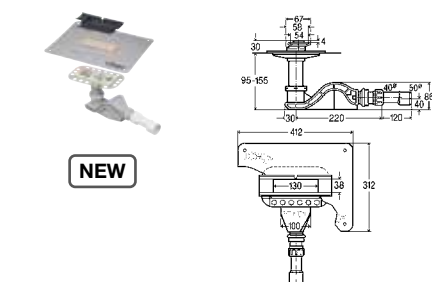
Water seal height 50 mm

Drainage capacity accumulation height 10 mm 0.5–0.65 l/s

Drainage capacity accumulation height 20 mm 0.55–0.7 l/s

L	CH	DN	PU	article
800	95–155	40/50	1	794 460
1000	95–155	40/50	1	794 477
1200	95–155	40/50	1	794 484

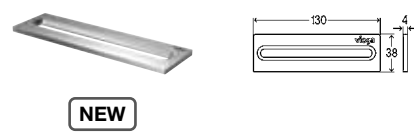
Model 4981.10



Advantix Cleviva shower channel base unit
■ for bonded sealing (tiled shower)

Technical data
Water seal height 50 mm
Drainage capacity accumulation height 10 mm 0.5–0.65 l/s
Drainage capacity accumulation height 20 mm 0.55–0.7 l/s
CH = 95–155 DN = 40/50 PU = 1

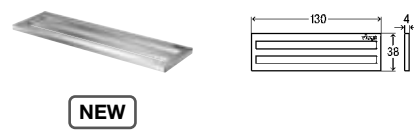
article 794 408 Model 4981.80



Advantix Cleviva shower channel inlay
Visign C1
single inlet opening
■ suitable for Advantix Cleviva shower channel base unit model 4981.80, 4981.81, Advantix Cleviva shower channel drain vertical model 4981.90
■ stainless steel 1.4301

Version = matt PU = 1

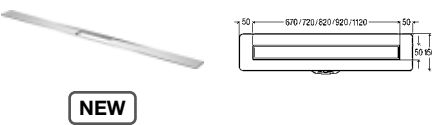
article 794 095 Model 4981.50



Advantix Cleviva shower channel inlay
Visign C2
double inlet opening
■ suitable for Advantix Cleviva shower channel base unit model 4981.80, 4981.81, Advantix Cleviva shower channel drain vertical model 4981.90
■ stainless steel 1.4301

Version = matt PU = 1

article 794 101 Model 4981.60

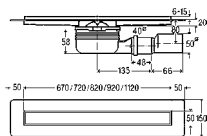


Advantix Cleviva shower channel profile
■ suitable for Advantix Cleviva shower channel base unit model 4981.80, 4981.81, Advantix Cleviva shower channel drain vertical model 4981.90
■ stainless steel 1.4301

Model	L	Version	PU	article
4981.30	800	matt	1	794 118
4981.31	1000	matt	1	794 125
4981.32	1200	matt	1	794 132

Advantix shower channel

Complete sets

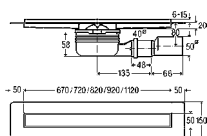


Advantix shower channel
with Advantix grate Visign ER10
■ for compound sealing (tiled shower) or sealing lane
■ stainless steel 1.4301

Technical data
Load class K=300 kg
Water seal height 50 mm
Drainage capacity accumulation height 10 mm 0.5 l/s
Drainage capacity accumulation height 20 mm 0.55 l/s

L	PU	article
750	1/19	753 153
800	1/19	753 160
900	1/19	753 177
1000	1/19	753 184
1200	1/19	753 191

Model 4983.10



Advantix shower channel
with Advantix grate Visign ER13
■ for compound sealing (tiled shower) or sealing lane
■ stainless steel 1.4301

Technical data
Load class K=300 kg
Water seal height 50 mm
Drainage capacity accumulation height 10 mm 0.5 l/s
Drainage capacity accumulation height 20 mm 0.55 l/s

L	PU	article
750	1/19	753 207
800	1/19	753 214
900	1/19	753 221
1000	1/19	753 238
1200	1/19	753 245

Model 4983.20

Overview

Advantix shower channels

Toolbox system

Installation height 95 mm or 70 mm
(40 mm if installed vertically)



4982.10
4982.20



4982.92
4982.93
4982.94
4982.83



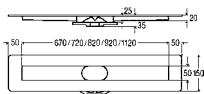
4982.90
4982.91



4982.50 / (ER 10)
4982.51 / (ER 10)
4982.60 / (ER 11)
4982.61 / (ER 11)
4982.71 / (ER 12)
4982.70 / (ER 13)
4982.80 / (ER 14)
4982.81 / (ER 14)



4982.30
4982.40
4982.45
4982.96

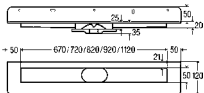


Advantix shower channel base unit
■ for compound sealing (tiled shower) or sealing lane
■ stainless steel 1.4301

Technical data
Load class K=300 kg
quality controlled in accordance with DIN EN 1253

L	PU	article
750	1	736 965
800	1	736 972
900	1	736 989
1000	1	736 996
1200	1	737 009

Model 4982.10

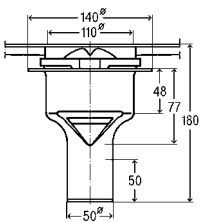


Advantix shower channel base unit
wall
■ for compound sealing (tiled shower) or sealing lane
■ stainless steel 1.4301

Technical data
Load class K=300 kg

L	PU	article
750	1	737 016
800	1	737 023
900	1	737 030
1000	1	737 047
1200	1	737 054

Model 4982.20

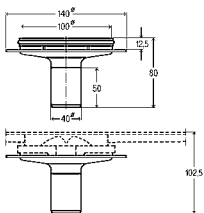


Advantix shower channel odour trap
■ for installation height from 40 mm
■ vertical drain

Technical data
Water seal height 50 mm
Drainage capacity accumulation height 10 mm 0.9 l/s
Drainage capacity accumulation height 20 mm 1.1 l/s
quality controlled in accordance with DIN EN 1253

DN = 50 PU = 1

article 737 597 Model 4982.94

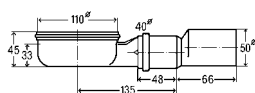


Advantix shower channel drain
■ vertical drain
■ without: odour trap

Technical data
Drainage capacity accumulation height 10 mm 1.2 l/s
Drainage capacity accumulation height 20 mm 1.2 l/s

DN = 40 PU = 1

article 766 955 Model 4982.83



**Advantix shower channel odour trap
(reconstruction model)**

■ for installation height from 70 mm

Technical data

Water seal height 25 mm

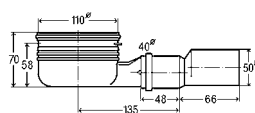
Drainage capacity accumulation height 10 mm 0.4 l/s

Drainage capacity accumulation height 20 mm 0.45 l/s

PU = 1

article 737 580

Model 4982.93



Advantix shower channel odour trap

■ for installation height from 95 mm

■ can be shortened after installation as reconstruction model

Technical data

Water seal height 50 mm

Drainage capacity accumulation height 10 mm 0.5 l/s

Drainage capacity accumulation height 20 mm 0.55 l/s

PU = 1

article 737 573

Model 4982.92



Advantix shower channels – Accessories



Advantix shower channel mounting frame

contour angular

- for rim height of 8–20 mm (tile + adhesive)
- matt
- suitable for Advantix shower channel grate Visign ER10 model 4982.50, 4982.51, Advantix shower channel grate Visign ER13 model 4982.70, Advantix shower channel grate Visign ER12 model 4982.71, Advantix shower channel grate Visign ER14 model 4982.80, 4982.81
- stainless steel 1.4301
- height-adjustable

L	Version	PU	article
750	matt	1	736 804
800	matt	1	736 811
900	matt	1	736 828
1000	matt	1	736 835
1200	matt	1	736 842

Model 4982.30



Advantix shower channel mounting frame

contour round

- for rim height of 8–20 mm (tile + adhesive)
- matt
- suitable for Advantix shower channel grate Visign ER11 model 4982.60, 4982.61, Advantix shower channel grate Visign ER13 model 4982.70, Advantix shower channel grate Visign ER12 model 4982.71, Advantix shower channel grate Visign ER14 model 4982.80, 4982.81
- stainless steel 1.4301
- height-adjustable

L	Version	PU	article
750	matt	1	737 061
800	matt	1	737 078
900	matt	1	737 085
1000	matt	1	737 092
1200	matt	1	737 108

Model 4982.40



Advantix shower channel accessory set

- for natural stone covering 23–36 mm
- matt
- suitable for Advantix shower channel mounting frame model 4982.30, 4982.40

Version = matt

PU = 1

article **745 400**

Model 4982.96



Advantix shower channel mounting frame

- for all Advantix shower channel grates, rim height of 12–15 mm (tile + adhesive)
- matt
- stainless steel 1.4301

L	Version	PU	article
750	matt	1	745 356
800	matt	1	745 363
900	matt	1	745 370
1000	matt	1	745 387
1200	matt	1	745 394

Model 4982.45



Advantix shower channel grate
Visign ER10
contour angular
■ for rim height of 6–15 mm (tile + adhesive)
■ stainless steel 1.4301
■ height-adjustable

Model	L	Version	PU	article
4982.50	750	matt	1	737 153
4982.50	800	matt	1	737 160
4982.50	900	matt	1	737 177
4982.50	1000	matt	1	737 184
4982.50	1200	matt	1	737 191
4982.51	750	polished	1	737 207
4982.51	800	polished	1	737 214
4982.51	900	polished	1	737 221
4982.51	1000	polished	1	737 238
4982.51	1200	polished	1	737 245



Advantix shower channel grate
Visign ER11
contour round
■ for rim height of 6–15 mm (tile + adhesive)
■ stainless steel 1.4301
■ height-adjustable

Model	L	Version	PU	article
4982.60	750	matt	1	737 252
4982.60	800	matt	1	737 269
4982.60	900	matt	1	737 276
4982.60	1000	matt	1	737 283
4982.60	1200	matt	1	737 290
4982.61	750	polished	1	737 306
4982.61	800	polished	1	737 313
4982.61	900	polished	1	737 320
4982.61	1000	polished	1	737 337
4982.61	1200	polished	1	737 344



Advantix shower channel grate
■ Visign ER12
■ for insertion of a surface of tile or natural stone of any height
■ stainless steel 1.4301
■ height-adjustable

L	PU	article
750	1	737 405
800	1	737 412
900	1	737 429
1000	1	737 436
1200	1	737 443

Model 4982.71



**Advantix shower channel grate
Visign ER13**

- for insertion of a surface of tile or natural stone of any height
- stainless steel 1.4301
- height-adjustable, surrounding frame 10 mm

	L	PU	article
	750	1	737 351
	800	1	737 368
	900	1	737 375
	1000	1	737 382
	1200	1	737 399

Model 4982.70



**Advantix shower channel grate
Visign ER14**

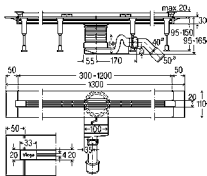
- for rim height of 6–18 mm (tile + adhesive)
- tempered glass (TG)
- height-adjustable

Model	L	Version	PU	article
4982.81	750	clear/light grey glass	1	737 504
4982.81	800	clear/light grey glass	1	737 511
4982.81	900	clear/light grey glass	1	737 528
4982.81	1000	clear/light grey glass	1	737 535
4982.81	1200	clear/light grey glass	1	737 542
4982.80	750	clear/light grey glass	1	737 450
4982.80	800	clear/light grey glass	1	737 467
4982.80	900	clear/light grey glass	1	737 474
4982.80	1000	clear/light grey glass	1	737 481
4982.80	1200	clear/light grey glass	1	737 498

**Advantix shower channel
Complete set**



NEW



Advantix Vario shower channel

- continuously cut to length
- for compound sealing (tiled shower) or sealing lane
- equipped with Advantix Vario shower channel standing grate model 4965.30
- high-quality plastic

Technical data
Water seal height 50 mm
Drainage capacity accumulation height 10 mm 0.4 l/s
Drainage capacity accumulation height 20 mm 0.8 l/s

L = 300–1200 CH = 95–150 DN = 40/50 Version = matt
PU = 1

article 704 353 Model 4965.20

Overview

Advantix Vario shower channels

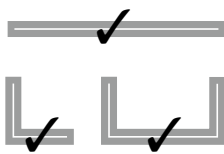
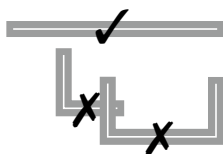
Toolbox system

Unit height 95 mm or 70 mm

4966.10
4965.10
4965.20



4965.30 Visign SR1

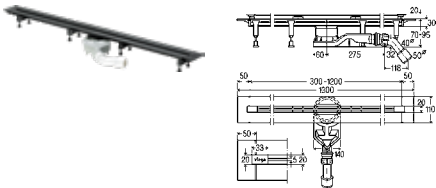


4965.12
4965.16
4966.16
4965.14
4966.14



4965.50
4965.60
4965.51

Visign SR1



DESIGN **PLUS**
powered by: **ISH**

INNOVATIONSPREIS
ARCHITEKTUR +
TECHNIK

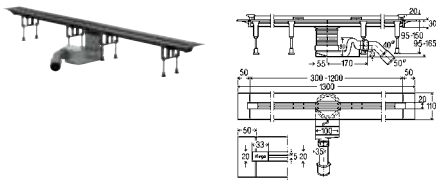
Advantix Vario shower channel base unit
continuously cut to length

- 70 mm
- (reconstruction model)
- for compound sealing (tiled shower) or sealing lane
- high-quality plastic

Technical data
Water seal height 25 mm
Drainage capacity accumulation height 10 mm 0.55 l/s
Drainage capacity accumulation height 20 mm 0.6 l/s

L = 300–1200 CH = 70–95 DN = 40/50 PU = 1

article **721 671** **Model 4966.10**



DESIGN **PLUS**
powered by: **ISH**

INNOVATIONSPREIS
ARCHITEKTUR +
TECHNIK

Advantix Vario shower channel base unit
continuously cut to length

- for compound sealing (tiled shower) or sealing lane
- high-quality plastic

Technical data
Water seal height 50 mm
Drainage capacity accumulation height 10 mm 0.4 l/s
Drainage capacity accumulation height 20 mm 0.8 l/s

L = 300–1200 CH = 95–150 DN = 40/50 PU = 1

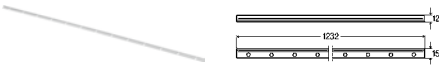
article **686 277** **Model 4965.10**



Advantix Vario shower channel standing grate

- suitable for Advantix Vario shower channel base unit model 4965.10, 4966.10
- stainless steel 1.4301

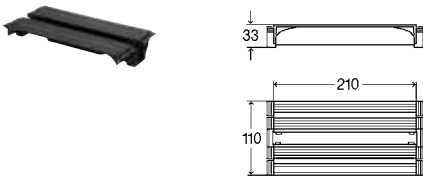
Model	Visign	L	Version	PU	article
4965.30	SR1	300–1200	matt	1	686 284
4965.31	SR2	300–1200	polished	1	686 291
4965.32	SR3	300–1200	black	1	711 870
4965.33	SR4	300–1200	white	1	711 887



Advantix Vario tile end rail
■ for Advantix Vario shower channel
■ for Advantix Vario wall drain
■ for rim height of 12–15 mm (tile + adhesive)
■ stainless steel 1.4301

L = 1232 Version = matt PU = 1

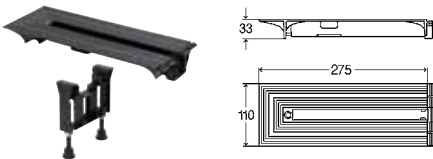
article **761 974** **Model 4982.84**



Advantix Vario connection piece
■ for connection of two shower channels
■ suitable for Advantix Vario shower channel base unit model 4965.10, Advantix Vario shower channel model 4965.20, 4965.21, Advantix Vario shower channel base unit model 4966.10
■ high-quality plastic

L = 210 W = 110 PU = 1

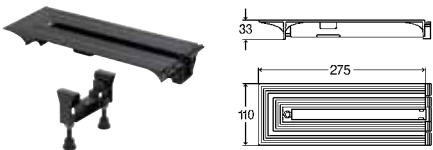
article **708 917** **Model 4965.12**



Advantix Vario end closing piece
■ for extension
■ suitable for Advantix Vario shower channel base unit model 4965.10, Advantix Vario shower channel model 4965.20, 4965.21
■ high-quality plastic

L = 275 W = 110 PU = 1

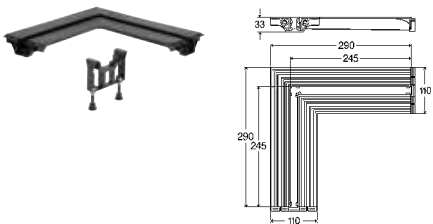
article **708 931** **Model 4965.16**



Advantix Vario end closing piece
70 mm
(reconstruction model)
■ for extension
■ suitable for Advantix Vario shower channel base unit model 4966.10
■ high-quality plastic

L = 275 W = 110 PU = 1

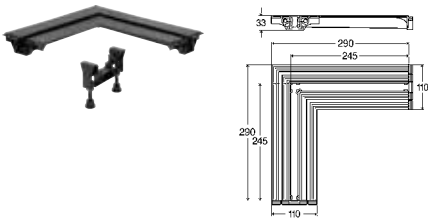
article **721 695** **Model 4966.16**



Advantix Vario connection piece
90°
■ for connection of two shower channels
■ suitable for Advantix Vario shower channel base unit model 4965.10, Advantix Vario shower channel model 4965.20, 4965.21
■ high-quality plastic

L1 = 290 L2 = 290 W = 110 PU = 1

article **708 924** **Model 4965.14**



Advantix Vario connection piece
90°

- 70 mm, (reconstruction model)
- for connection of two shower channels
- suitable for Advantix Vario shower channel base unit model 4966.10
- high-quality plastic

L1 = 290 L2 = 290 W = 110 PU = 1

article **721 688** **Model 4966.14**



Advantix Vario shower channel standing grate set

- suitable for Advantix Vario connection piece 90° model 4965.14, Advantix Vario end closing piece model 4965.16, Advantix Vario connection piece 90° model 4966.14, Advantix Vario end closing piece model 4966.16
- stainless steel 1.4301

Model	Visign	L	Version	PU	article
4965.60	SR1	200	matt	1	711 832
4965.61	SR2	200	polished	1	711 849
4965.62	SR3	200	black	1	711 856
4965.63	SR4	200	white	1	711 863



Overview

Advantix Vario wall drain

Toolbox system

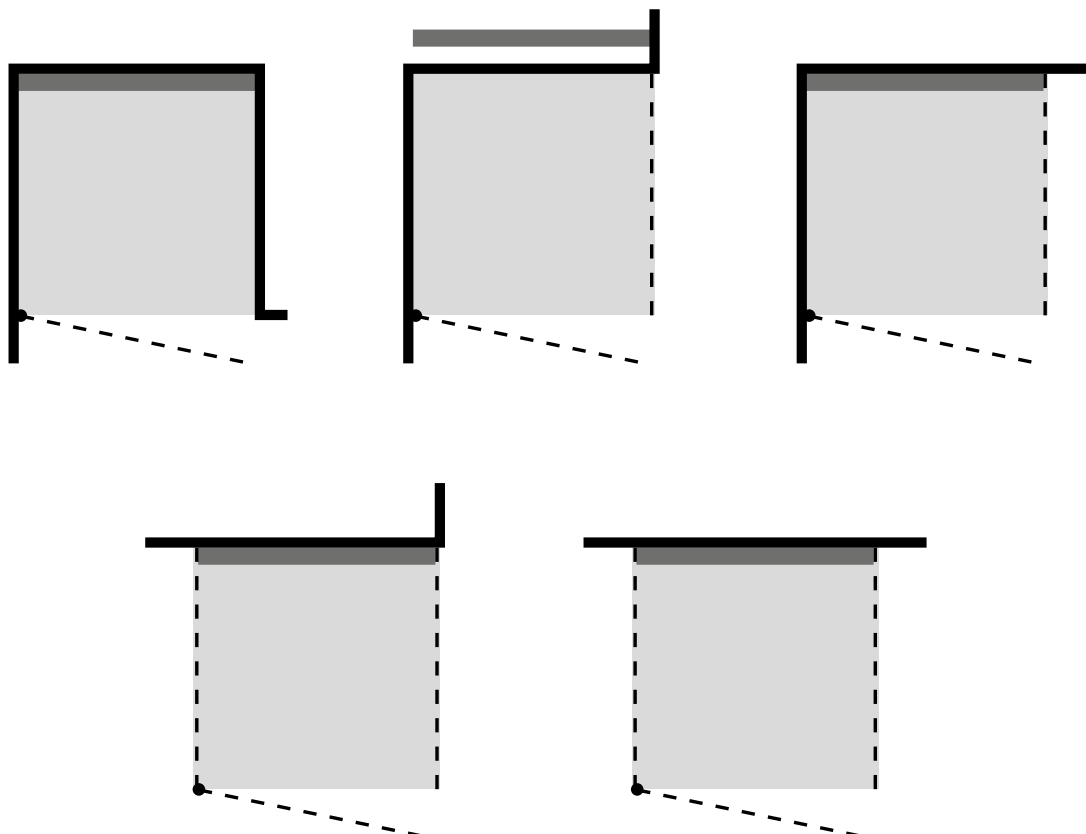
Unit height 95 mm or 70 mm,
toolbox system only

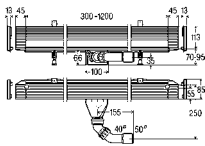


4968.10
4967.10



4967.30 Visign SR1



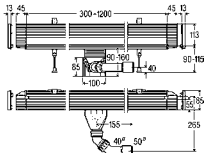


Advantix Vario shower channel base unit
wall

- continuously cut to length, 70 mm, (reconstruction model)
- for compound sealing (tiled shower) or sealing lane
- high-quality plastic

Technical data
Water seal height 30 mm
Drainage capacity accumulation height 10 mm 0.4 l/s
Drainage capacity accumulation height 20 mm 0.5 l/s
Installation depth wall 25 mm

L = 300–1200 CH = 70–100 DN = 40/50 PU = 1
article 736 736 Model 4968.10



Advantix Vario shower channel base unit
wall

- continuously cut to length
- for compound sealing (tiled shower) or sealing lane
- high-quality plastic

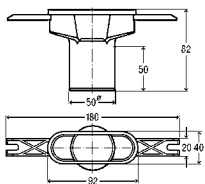
Technical data
Water seal height 50 mm
Drainage capacity accumulation height 10 mm 0.45 l/s
Drainage capacity accumulation height 20 mm 0.6–0.75 l/s
Installation depth wall 25 mm

L = 300–1200 CH = 90–160 DN = 40/50 PU = 1
article 736 552 Model 4967.10



- Advantix Vario shower channel standing grate**
wall
- suitable for Advantix Vario shower channel base unit wall model 4967.10, 4968.10
 - stainless steel 1.4301

Model	Visign	L	Version	PU	article
4967.30	SR1	300–1200	matt	1	736 569
4967.31	SR2	300–1200	polished	1	736 576
4967.32	SR3	300–1200	black	1	736 583
4967.33	SR4	300–1200	white	1	736 590



Advantix Vario shower channel drain
vertical

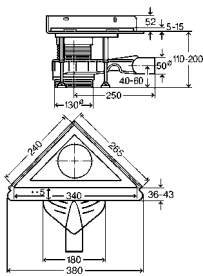
- without: odour trap

Technical data
Drainage capacity accumulation height 10 mm 0.7 l/s
Drainage capacity accumulation height 20 mm 1 l/s

DN = 50 PU = 1
article 769 550 Model 4965.79

Advantix corner drains

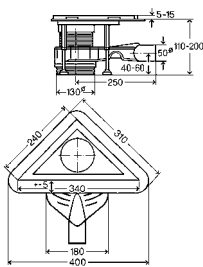
Installation height from 110 mm



Advantix corner drain
■ for compound sealing (tiled shower) or sealing lane
■ stainless steel 1.4301

Technical data
Load class K=300 kg
Drainage capacity accumulation height 10 mm 0.75–1.75 l/s
Drainage capacity accumulation height 20 mm 0.8–1.1 l/s

Model	DN	CH	HD	Version	PU	article
4972.80	40/50	110–200	✓	matt	1	592 363
4972.81	40/50	110–200	✓	polished	1	619 794



Advantix corner drain
■ for compound sealing (tiled shower) or sealing lane
■ stainless steel 1.4301
■ without: wall sheet

Technical data
Load class K=300 kg
Drainage capacity accumulation height 10 mm 0.75–1.75 l/s
Drainage capacity accumulation height 20 mm 0.8–1.1 l/s

Model	DN	CH	HD	Version	PU	article
4972.82	40/50	110–200	✓	matt	1	627 010
4972.83	40/50	110–200	✓	polished	1	627 003



Advantix grate
Visign EA1
■ stainless steel 1.4301

Model	L	H	Version	PU	article
4972.30	165	20	matt	1	592 387
4972.31	165	20	polished	1	592 394



Advantix grate
Visign EA2
■ stainless steel 1.4301

Model	L	H	Version	PU	article
4972.40	165	20	matt	1	592 400
4972.41	165	20	polished	1	592 417



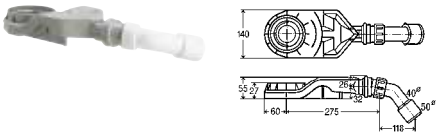
Advantix grate
Visign EA3
■ stainless steel 1.4301

Model	L	H	Version	PU	article
4974.10	165	20	matt	1	605 414
4974.11	165	20	polished	1	605 407



Advantix grate
Visign EA4
■ for insertion of a covering of tile or natural stone up to 15 mm thick
■ stainless steel 1.4301

L = 165	H = 20	Version = matt	PU = 1
article	605 704		Model 4974.20



Advantix odour trap
(reconstruction model)
■ for conversion of Advantix corner drain to 66 mm installation height
■ not suitable for Advantix corner drain model 4973.81
■ suitable for Advantix corner drain model 4972.80, 4972.81, 4972.82, 4972.83

Technical data
Water seal height 25 mm
Drainage capacity accumulation height 10 mm 0.4 l/s
Drainage capacity accumulation height 20 mm 0.45 l/s

DN = 40/50 PU = 1

article	690 397	Model 4980.65
---------	---------	---------------

Viega drains and odour siphons

IMPRESS ON EVERY
SINGLE DETAIL TO
ASSURE SATISFACTION.

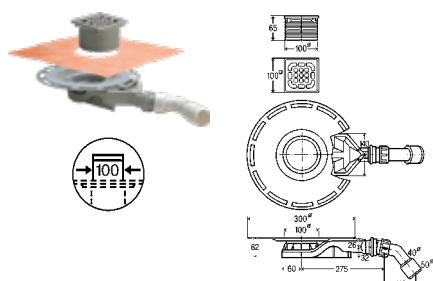
Viega Advantix grids

They place a powerful accent in every bathroom concept. Viega design grids are available with corners and edges, or with organic rounded forms to match the surroundings – as well as in a corner solution. All are finished from high-quality and durable stainless steel, and feature various perforation patterns.



Advantix bath drains

System size 100



Advantix bath drain

- 62 mm, (reconstruction model)
- for compound sealing (tiled shower) with sealing mat
- system dimension 100

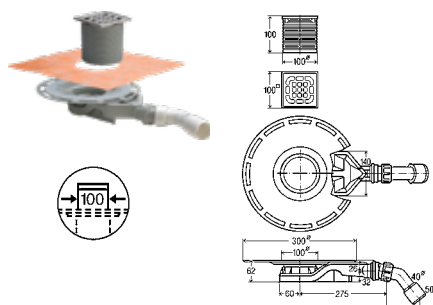
Technical data

Load class K=300 kg
 Water seal height 25 mm
 Drainage capacity accumulation height 10 mm 0.5 l/s
 Drainage capacity accumulation height 20 mm 0.55 l/s

DN = 40/50 CH = 62 PU = 1

article 687 694

Model 4980.60



Advantix bath drain

- 62 mm, (reconstruction model)
- for compound sealing (tiled shower) with sealing mat
- system dimension 100

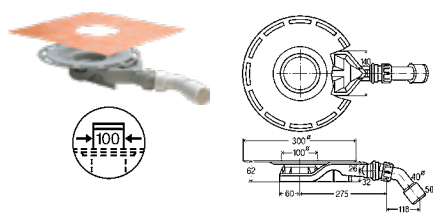
Technical data

Load class K=300 kg
 Water seal height 25 mm
 Drainage capacity accumulation height 10 mm 0.5 l/s
 Drainage capacity accumulation height 20 mm 0.55 l/s

DN = 40/50 CH = 62 PU = 1

article 687 700

Model 4980.61



Advantix bath drain

- 62 mm, (reconstruction model)
- for compound sealing (tiled shower) with sealing mat
- system dimension 100
- without: top

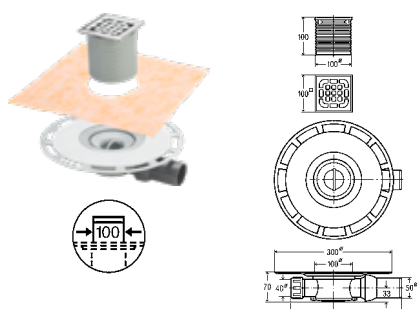
Technical data

Water seal height 25 mm
 Drainage capacity accumulation height 10 mm 0.5 l/s
 Drainage capacity accumulation height 20 mm 0.55 l/s

DN = 40/50 CH = 62 PU = 1

article 687 687

Model 4980.63



Advantix bath drain

- for compound sealing (tiled shower) with sealing mat
- system dimension 100

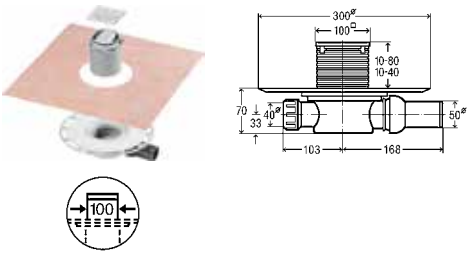
Technical data

Load class K=300 kg
 Water seal height 30 mm
 Drainage capacity accumulation height 10 mm 0.45 l/s
 Drainage capacity accumulation height 20 mm 0.5 l/s

DN = 50 HD = ✓ PU = 1

article 565 701

Model 4939



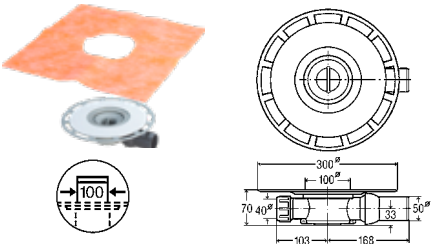
Advantix bath drain
■ for compound sealing (tiled shower) with sealing mat
■ system dimension 100, odour proof

Technical data
Water seal height 30 mm
Load class K=300 kg
Drainage capacity accumulation height 10 mm 0.33 l/s
Drainage capacity accumulation height 20 mm 0.4 l/s

DN	HD	PU	article
50	✓	1	583 231 ¹
50	✓	1	617 288 ²

¹⁾ top with frame made of plastic
²⁾ top with frame made of stainless steel 1.4404

Model 4936.4

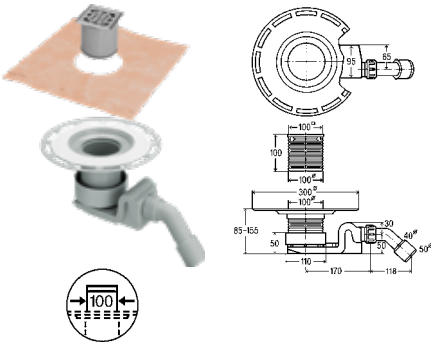


Advantix bath drain
■ for compound sealing (tiled shower) with sealing mat
■ system dimension 100
■ without: top

Technical data
Water seal height 30 mm
Drainage capacity accumulation height 10 mm 0.45 l/s
Drainage capacity accumulation height 20 mm 0.5 l/s

DN = 50 HD = ✓ PU = 1

article 565 695 Model 4938

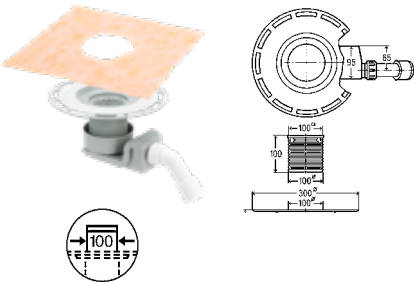


Advantix bath drain
■ for compound sealing (tiled shower) with sealing mat
■ system dimension 100

Technical data
Load class K=300 kg
Drainage capacity accumulation height 10 mm 0.4 l/s
Drainage capacity accumulation height 20 mm 0.55 l/s

DN = 40/50 PU = 1

article 557 058 Model 4927

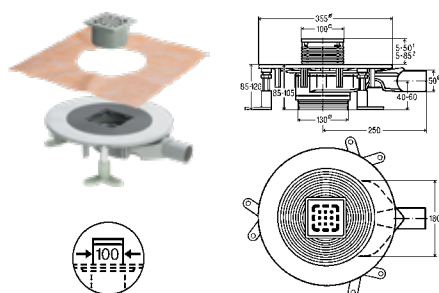


Advantix bath drain
■ for compound sealing (tiled shower) with sealing mat
■ system dimension 100
■ without: top

Technical data
Drainage capacity accumulation height 10 mm 0.4 l/s
Drainage capacity accumulation height 20 mm 0.55 l/s

DN = 40/50 PU = 1

article 557 065 Model 4927.1

**Advantix Top bath drain**

- for compound sealing (tiled shower) with sealing mat
- not suitable for Advantix stacking element model 4994
- system dimension 100

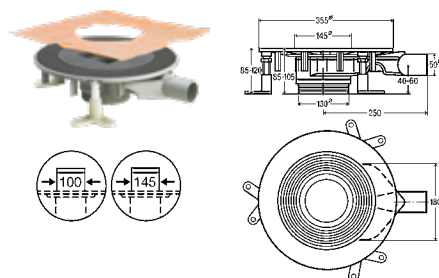
Technical data

Load class K=300 kg

Drainage capacity accumulation height 10 mm 0.75–0.95 l/s

Drainage capacity accumulation height 20 mm 0.8–1.8 l/s

DN	CH	HD	PU	article
50	85–120	✓	1	669 249¹
50	85–120	✓	1	669 256²

¹⁾ top with frame made of plastic²⁾ top with frame made of stainless steel 1.4404**Model 4914.20****Advantix Top bath/floor drain****base unit**

- for compound sealing (tiled shower) with sealing mat
- not suitable for Advantix stacking element model 4994
- system dimension 100, system dimension 145

Technical data

Drainage capacity accumulation height 10 mm 0.75–1.15 l/s

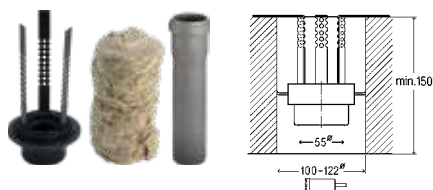
Drainage capacity accumulation height 20 mm 0.8–1.2 l/s

DN = 50

CH = 85–120

HD = ✓

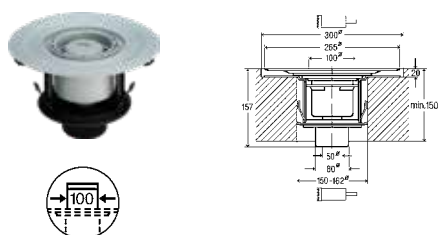
PU = 1

article 669 232**Model 4914.2****Advantix pipe lead-in****fire protection R120**

- for polypropylene pipe and connected water seal odour trap

DN = 50

PU = 1

article 491 673**Model 4923.5****Advantix bath drain****fire protection R120****base unit**

- for installation in ceiling with fire resistance class F30–F120 with thickness of min. 150 mm
- PP
- system dimension 100
- without: top

Technical data

Drainage capacity accumulation height 10 mm 0.7 l/s

Drainage capacity accumulation height 20 mm 0.9 l/s

DN = 50

VD = ✓

PU = 1

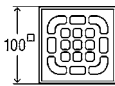
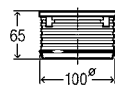
article 491 642**Model 4926.20**

**Advantix top**

tileable

- for insertion of a 5–30 mm thick covering made of tiles or natural stone, use in connection with Viega drain or Advantix stacking element for bonded sealing
- system dimension 100

L = 100 W = 100 PU = 1

article 709 112**Model 4932.2****Advantix top**

- system dimension 100

Technical data

Load class K=300 kg

L	W	H	PU	article
100	100	5	1	555 177 ¹
100	100	5	1	555 184 ²

¹) not screwed²) screwed**Model 4934.1****Advantix top**

- system dimension 100

Technical data

Load class K=300 kg

L	W	H	PU	article
100	100	5	1	555 191 ¹
100	100	5	1	555 207 ²

¹) not screwed²) screwed**Model 4934.2****Advantix top**

- system dimension 100, screwed

Technical data

Load class L=1500 kg

L = 100 W = 100 H = 5 PU = 1

article 555 214**Model 4934.3****Advantix top**

- system dimension 100, lockable, solid

Technical data

Load class L=1500 kg

L = 100 W = 100 H = 5 PU = 1

article 648 152**Model 4934.31****Advantix top**

- system dimension 100

Technical data

Load class K=300 kg

L	W	H	PU	article
150	150	5	1	555 221 ¹
150	150	5	1	555 238 ²

¹) not screwed²) screwed**Model 4934.4**



Advantix top

■ system dimension 100

Technical data
Load class K=300 kg

L	W	H	PU	article
150	150	5	1	555 245 ¹
150	150	5	1	555 450 ²

¹) not screwed

²) screwed

Model 4934.5



Advantix top

■ system dimension 100, screwed

Technical data
Load class L=1500 kg

L = 150 W = 150 H = 5 PU = 1

article 555 467 Model 4934.6



Advantix renovation top

■ for installation in new tile surface over old drain

Technical data
Load class K=300 kg

L = 100 W = 100 H = 5 PU = 1

article 627 065 Model 4934.8



Advantix top frame

■ for Advantix grate 143x143 mm
■ not suitable for Advantix grate Visign RS5 model 4976.20, 4976.21
■ system dimension 100

L = 150 W = 150 PU = 1

article 534 493 Model 4912.2



Advantix top frame

■ for Advantix grate 94x94 mm
■ system dimension 100

L = 100 W = 100 PU = 1

article 534 516 Model 4922.2



Advantix renovation top

■ for installation in new tile surface over old drain

Technical data
Load class K=300 kg

L = 150 W = 150 H = 5 PU = 1

article 627 072 Model 4922.9

**Advantix top frame**

- not suitable for Advantix grate Visign RS5 model 4976.20, 4976.21
- system dimension 100

L	W	PU	article
100	100	1	488 987 ¹
150	150	1	488 994 ²

¹) for Advantix grate 94x94 mm²) for Advantix grate 143x143 mm**Model 4949.1****Advantix grate**

- stainless steel 1.4301
- system dimension 100, drawn

Technical data
Load class K=300 kg

L	W	H	PU	article
94	94	5	1	554 026 ¹
94	94	5	1	554 033 ²

¹) not screwed²) screwed**Model 4933.3****Advantix-Rost**

- Edelstahl 1.4404
- Systemmaß 100, massiv

Technische Daten
Belastungsklasse L=1500 kg

L = 94 W = 94 H = 5 PU = 1

article 534 479 Model 4933.1

**Advantix grate**

- stainless steel 1.4301
- system dimension 100, drawn

Technical data
Load class K=300 kg

L	W	H	PU	article
143	143	5	1	554 866 ¹
143	143	5	1	555 047 ²

¹) not screwed²) screwed

* = Discontinued, limited availability

Model 4933.5**Advantix closing panel**

- stainless steel 1.4404
- system dimension 100, solid

Technical data
Load class L=1500 kg

L = 94 W = 94 H = 5 PU = 1

article 648 176 Model 4933.11

**Advantix grate
Visign RS1**

- suitable for Advantix top frame article 488 987
- stainless steel 1.4301
- system dimension 100, solid

L = 94 W = 94 H = 5 PU = 1

article 492 281 Model 4928.1



Advantix grate
Visign RS2

- suitable for Advantix top frame article 488 987
- stainless steel 1.4301
- system dimension 100, solid

L = 94 W = 94 H = 5 PU = 1

article 492 298 Model 4928.2



Advantix grate
Visign RS3

- suitable for Advantix top frame article 488 987
- stainless steel 1.4301
- system dimension 100, solid

L = 94 W = 94 H = 5 PU = 1

article 492 304 Model 4928.3



Advantix grate
Visign RS4

- suitable for Advantix top frame article 488 987
- stainless steel 1.4301
- system dimension 100, solid

L = 94 W = 94 H = 5 PU = 1

article 492 311 Model 4928.4



Advantix grate
Visign RS5

- suitable for Advantix top frame article 488 987
- tempered glass (TG)
- system dimension 100

Model	L	W	H	Version	PU	article
4976.10	94	94	5	clear/light grey glass	1	617 127
4976.11	94	94	5	clear/black glass	1	617 141



Advantix grate
Visign

- suitable for Advantix top frame model 4922.2
- plastic
- system dimension 100

L = 100 W = 100 H = 5 Version = chrome-plated PU = 1

article 446 086 Model 4921.8



**Advantix grate
Visign RS11**

- suitable for Advantix top frame model 4962
- stainless steel 1.4301
- system dimension 100, solid

Ø = 110 H = 5 PU = 1

article 586 423 Model 4962.1



**Advantix grate
Visign RS12**

- suitable for Advantix top frame model 4962
- stainless steel 1.4301
- system dimension 100, solid

Ø = 110 H = 5 PU = 1

article 586 430 Model 4962.2



**Advantix grate
Visign RS13**

- suitable for Advantix top frame model 4962
- stainless steel 1.4301
- system dimension 100, solid

Ø = 110 H = 5 PU = 1

article 586 447 Model 4962.3



**Advantix grate
Visign RS14**

- suitable for Advantix top frame model 4962
- stainless steel 1.4301
- system dimension 100, solid

Ø = 110 H = 5 PU = 1

article 586 652* Model 4962.4

* = Discontinued, limited availability



**Advantix grate
Visign RS15**

- suitable for Advantix top frame model 4962
- tempered glass (TG)
- system dimension 100

Model	Ø	H	Version	PU	article
4976.30	110	5	clear/light grey glass	1	617 165
4976.11	110	5	clear/black glass	1	617 189

**Advantix height adjustment piece**

- for height adjustment from 40–95 mm
- system dimension 100

PU = 6

article 111 496

Model 4947

**Advantix clamping ring**

- stainless steel
- system dimension 100

PU = 6

article 287 900

Model 4948.21



Viega Eleganta odour siphon

HIGH-QUALITY DESIGN ACCENTS THAT PLEASANTLY SURPRISE YOUR GUESTS.

With Viega Eleganta, the siphon under a washbasin does not only serve as an odour trap, but also creates a visual unit together with the corner valves. This not only emphasises the high-quality finish of a room, but also does away with the need for additional furniture, which often conceals standard connections. Especially easy cleaning and durability are both a matter of course, thanks to the high-quality surfaces.



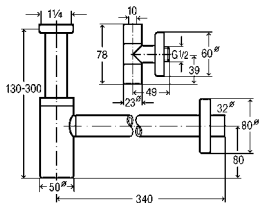
Drains for washbasins and bidets



Eleganta bottle odour trap
■ chrome-plated brass

G = 1¼ DN = 32 PU = 1

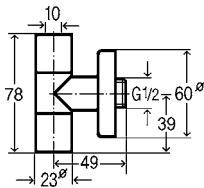
article 440 190 Model 5788



Eleganta set bottle odour trap
■ equipped with Eleganta corner valve
model 5788.45
■ chrome-plated brass

G = 1¼ DN = 32 PU = 1

article 492 489 Model 5788.4



Eleganta corner valve
■ chrome-plated brass
■ self-sealing R-thread

R = ½ DN = 10 QS = 2 PU = 1
QS = Quantity per set

article 556 150 Model 5788.45



Universal valve

G	Ø	Version	PU	article
1¼	60	polished	50	100 261 ¹
1¼	60	polished brass	1	129 286 ²
1¼	60	chrome matt	1	310 653 ¹
1¼	60	pure white=RAL 9010	1	118 679 ¹

¹) valve top made of stainless steel
²) valve top made of brass

Model 5121

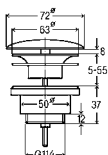


Universal valve

G = 1¼ Ø = 60 Version = grau PU = 50
article 101 299 Model 5121.3

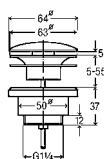


Universal valve G = 1¼ Ø = 60 PU = 50
article 104 337 Model 5125



Universal valve
Visign V1
■ chrome-plated
brass
■ non-lockable

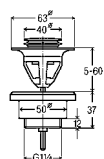
G = 1¼ Ø = 63 PU = 1
article 492 670 Model 5438



**Universal valve
Visign V1**
■ chrome-plated
brass
■ lockable

G = 1¼ Ø = 63 PU = 1

article 492 687 Model 5439



**Universal valve
Visign V1**
■ chrome-plated
brass
■ lockable

G = 1¼ Ø = 63 PU = 1

article 680 701 Model 5439.5



**Universal valve
Visign V2**
■ chrome-plated
brass
■ non-lockable

G = 1¼ Ø = 63 PU = 1

article 492 793 Model 5440



**Universal valve
Visign V2**
■ chrome-plated brass
■ lockable

G = 1¼ Ø = 63 PU = 1

article 492 809 Model 5441



Slotted valve
■ brass
■ without: overflow

G = 1¼ Ø = 63 L = 70 Version = chrome-plated PU = 1

article 113 513 Model 5212.1



Slotted valve
brass

G	Ø	L	Version	PU	article
1¼	60	70	chrome-plated	1	111 861
1¼	60	70	pure white=RAL 9010	1	129 040*

* = Discontinued, limited availability

Model 5222.1



Slotted valve
■ chrome-plated brass
■ without: overflow

G = 1¼ Ø = 60 L = 70 PU = 1

article 112 936 Model 5216.1



Slotted valve
■ brass

G	Ø	L	Version	PU	article
1¼	60	70	chrome-plated	1	116 637
1¼	60	70	chrome matt	1	310 554
1¼	60	70	pure white=RAL 9010	1	131 487

Model 5226.1



**Slotted valve
Visign V1**
■ chrome-plated brass
■ non-lockable
■ without: overflow

G	Ø	L	PU	article
1¼	63	50	1	492 571
1¼	63	75	1	492 557

Model 5430



**Slotted valve
Visign V1**
■ chrome-plated brass
■ lockable
■ without: overflow

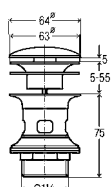
G	Ø	L	PU	article
1¼	63	50	1	492 588
1¼	63	75	1	492 564

Model 5431

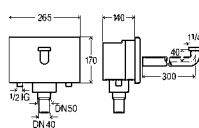


**Slotted valve
Visign V1**
■ chrome-plated brass
■ non-lockable

G = 1¼	Ø = 63	L = 75	PU = 1
article	492 595		Model 5432

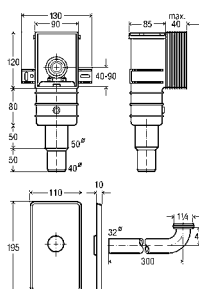


Slotted valve Visign V1	G = 1¼	Ø = 63	L = 75	PU = 1
■ chrome-plated brass ■ lockable	article	492 601		Model 5433



Concealed connection box
■ for WB with single-hole fitting,
wet construction installation
■ plastic

PU = 50
article 734 817
Model 8314



Odour trap
■ for concealed mounting
■ plastic
■ height-adjustable
quality controlled in accordance with DIN EN 274

Model	G	DN	PU	article
5633.1	1¼	50/40	1	553 753¹
5633.2	1¼	50/40	1	553 760²

¹⁾ plastic cover plate chrome-plated, drain elbow brass chrome-plated
²⁾ white plastic cover plate, white plastic drain elbow

**Odour trap**

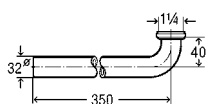
- for concealed mounting
- plastic
- height-adjustable
- without: drain elbow

G = 1¼ DN = 50/40 PU = 1

article 553 777 Model 5633.3**Cover plate**

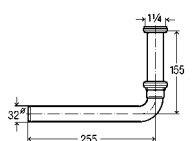
- plastic

H	W	T	Version	PU	article
195	110	10	chrome-plated	1	592 516
195	110	10	design-white	1	670 979

Model 5633.90**Drain elbow 90°**

- chrome-plated brass

G = 1¼ DN = 32 L = 350 PU = 1

article 575 588 Model 5621.24**Drain elbow 90°**

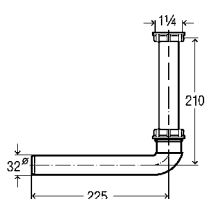
- chrome-plated brass

G = 1¼ DN = 32 L = 255 PU = 10

article 119 263 Model 5621.1-880**Drain elbow 90°**

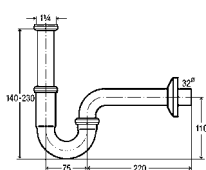
- plastic

G = 1¼ DN = 32 L = 300 PU = 1

article 618 865 Model 5621.25**Drain elbow 90°**

- plastic

G = 1¼ DN = 32 L = 225 PU = 1

article 368 906 Model 5632.2**Pipe odour trap****Plus siphon**

- brass

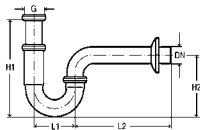
G	DN	Version	PU	article
1¼	32	chrome-plated	25	101 572
1¼	32	polished brass	1	125 165
1¼	32	chrome matt	1	310 226
1¼	32	pure white=RAL 9010	1	108 939

Model 5611.5



Pipe odour trap
Plus siphon
■ chrome-plated
brass

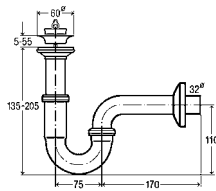
G = 1¼	DN = 32	PU = 1	
article	445 577		Model 5611.6



Pipe odour trap
■ chrome-plated
brass

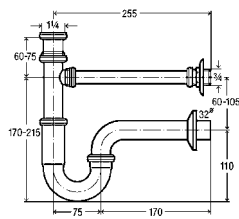
G	DN	d	L1	L2	H1	H2	PU	article
1¼	32		75	170	140–190	115	50	305 611
1¼		38	85	200	160–220	125	1	123 451
1¼		38	85	200	140–200	125	1	122 515

Model 5611



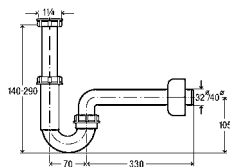
Pipe odour trap
■ chrome-plated
brass

G = 1¼	DN = 32	PU = 25	
article	111 298		Model 5612



Pipe odour trap
■ chrome-plated
brass

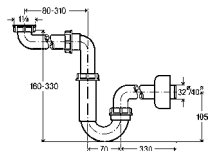
G = 1¼	DN = 32	PU = 10	
article	109 950		Model 5611.02



Pipe odour trap
■ plastic

G	DN	PU	article
1¼	32	50	105 952
1¼	40	50	406 462

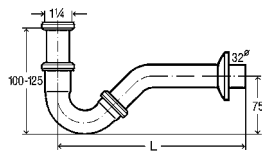
Model 5611K



Pipe odour trap
■ plastic
■ space saving

G	DN	PU	article
1¼	32	50	606 220
1¼	40	50	606 237

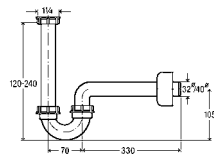
Model 5729



Pipe odour trap

- for bidet
- brass

G = 1 1/4 DN = 32 L = 245 Version = chrome-plated PU = 10
article 103 781 Model 5535

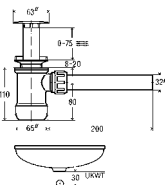


Pipe odour trap

- for bidet
- plastic

G	DN	L	PU	article
1 1/4	32		10	218 980
1 1/4	410	400	50	406 486

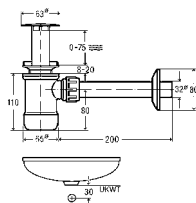
Model 5536



Bottle odour trap

- for WB without overflow
- plastic

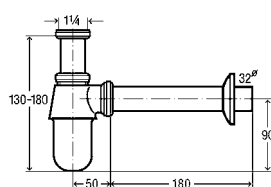
DN = 32 PU = 1
article 470 081 Model 5420



Bottle odour trap

- for WB without overflow
- brass

DN = 32 PU = 1
article 472 528 Model 5421



Bottle odour trap

- brass

G	DN	Version	PU	article
1 1/4	32	chrome-plated	25	100 674
1 1/4	32	polished brass	1	134 990*
1 1/4	32	chrome matt	1	310 158*

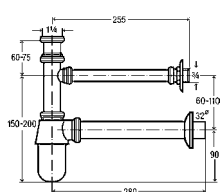
* = Discontinued, limited availability

Model 5753

**Bottle odour trap**

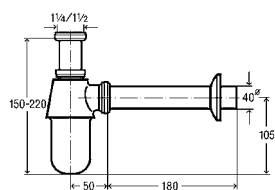
- chrome-plated
- brass
- without: drain pipe

G = 1¼ DN = 32 PU = 25

article 102 845 Model 5754
**Bottle odour trap**

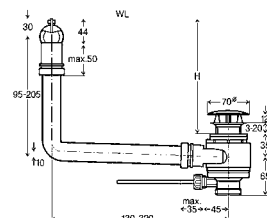
- chrome-plated
- brass

G = 1¼ DN = 32 PU = 1

article 125 455 Model 5753.02
**Bottle odour trap**

- chrome-plated
- brass

G	DN	PU	article
1¼	40	10	114 213
1¼	40	1	125 844

Model 5763**Bottle odour trap**

- chrome-plated
- brass

G = 1¼ Ø = 60 PU = 10

article 671 471 Model 5763
**Drain pipe**

- brass

DN	L	Version	PU	article
32	75	chrome-plated	5	121 587
32	120	chrome-plated	5	670 856
32	150	chrome-plated	10	670 863
32	200	chrome-plated	50	100 599
32	250	chrome-plated	50	101 480
32	300	chrome-plated	50	102 203
32	300	pure white=RAL 9010	5	125 813
32	300	polished brass	1	141 493
32	300	chrome matt	1	310 011
32	500	chrome-plated	5	128 326
38	300	chrome-plated	1	142 766
40	300	chrome-plated	5	131 388

Model 9945-143



T-piece
 ■ chrome-plated
 copper

DN = 32 PU = 1
article 622 312

Model 5697



Coupling
 ■ chrome-plated
 brass

DN = 32 PU = 25
article 102 371

Model 5695



Coupling
 ■ chrome-plated brass
 ■ without internal fitting

DN = 32 PU = 10
article 117 221

Model 5619.4



Coupling
 ■ chrome-plated
 brass

DN	PU	article
32	1	105 488
40	1	129 477

Model 5972.153



T-piece
 ■ for connection of two
 washbasin odour traps at
 the double washbasin
 ■ chrome-plated brass

G = 1¼ DN = 32 L = 250 PU = 1
article 120 573

Model 5617



Outlet pipe
 ■ chrome-plated
 brass

G	L	PU	article
½	65	2	129 484
½	110	2	141 752
½	150	2	167 097
½	65	2	113 056
½	110	2	123 406
½	150	2	149 253

Model 1931



Pipe
 ■ for drain pipe ex-
 tension
 ■ plastic
 ■ without: flanged
 rim

d	L	PU	article
32	200	25	193 508
32	250	10	613 280
40	200	10	699 987

Model 5725V-542







Viega Multiplex

BATHTUB FILLING



Multiplex Trio series

AS RELIABLE AS YOUR SERVICE.

While appearing to be a standard component, Viega solutions for bathtub filling also turn out to be an effective means of increasing comfort and differentiating between rooms. That makes it even more reassuring to know that reliable filling and draining technology

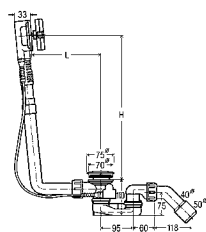
lasts for decades. That's because the best quality is not only reflected in the operating concept, but also in the fact that it gives pleasure to as many guests as possible.





Drains for bath tubs and shower trays as toolbox systems, for bathtubs with a drain hole diameter betw. 90 and 52

Multiplex		Multiplex Trio	
 <p>6162.1 6163.1 6163.2</p>	 <p>6162.01 6154.0 6171.0</p>	 <p>6161.52 6161.62 6161.72</p>	 <p>6161.01 6161.13 6170.0</p>
 <p>6142.32 6142.33</p>		 <p>6141.62 6141.72</p>	
 <p>6142.01 6156.0</p>		 <p>6141.01 6141.02</p>	

**Multiplex drain/overflow****Visign M5**

flat version; only 33 mm space required behind the bathtub

Components

chrome-plated rotatable rosette, chrome-plated valve cone, odour trap, drain elbow 45°, chrome-plated valve

Technical data

Water seal height 50 mm

Drainage capacity accumulation height 300 mm 0.92 l/s

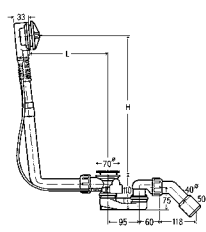
Spillway capacity accumulation height 60 mm over mid of spill hole 0,63 l/s

DN = 40/50 BWL = 560 L = 100–260 H = 180–400

SB = ✓ B52 = ✓ PU = 24

article 101 909

Model 6162.45

**Multiplex drain/overflow****functional unit**

flat version; only 33 mm space required behind the bathtub

without: rotatable rosette, valve cone

Technical data

Water seal height 50 mm

Drainage capacity accumulation height 300 mm 0.92 l/s

Spillway capacity accumulation height 60 mm over mid of spill hole 0,63 l/s

Model	DN	BWL	L	H	SB	BCC	XLB	B52	PU	article
6162.1	40/50	560	100–260	180–400	✓			✓	24	103 071
6163.1	40/50	725	130–370	180–430		✓		✓	5	111 069
6163.2	40/50	1070	130–680	180–480			✓	✓	10	308 889

**Multiplex equipment set****Visign M5**

for drain/overflow functional unit

Version	PU	article
chrome-plated	10	721 244
chrome matt	1	735 906
stainless steel coloured/brushed	1	735 890
design-white	1	735 883
special colour	1	765 873¹
metallic colour	1	765 880¹
gold-plated	1	765 897¹

¹⁾ Delivery time for customer-individual range: 10 weeks plus shipping; non-returnable!

Model 6162.01

**Multiplex equipment set****Visign M3**

for drain/overflow functional unit

Version	PU	article
chrome-plated	1	576 325
design-white	1	735 913
special colour	1	765 910¹
metallic colour	1	765 927¹
gold-plated	1	765 934¹

¹⁾ Delivery time for customer-individual range: 10 weeks plus shipping; non-returnable!

Model 6154.0

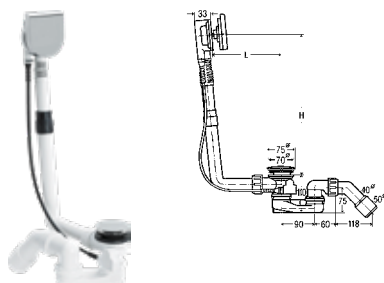
**Multiplex equipment set****Visign M9**

water level increase plus 5 cm

■ for drain/overflow functional unit

Version	PU	article
chrome-plated	1	724 597
special colour	1	765 941¹
metallic colour	1	766 450¹
gold-plated	1	766 467¹

¹⁾ Delivery time for customer-individual range: 10 weeks plus shipping;
non-returnable!

Model 6171.0**Multiplex drain/overflow****Visign M9**

water level increase plus 5 cm

■ flat version; only 33 mm space required behind the bathtub, alternatively increase of the water level

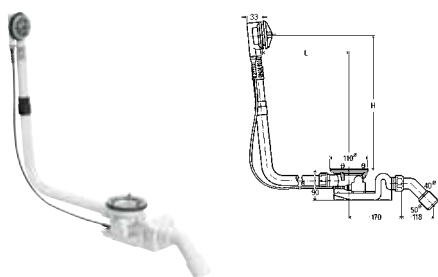
Technical data

Water seal height 50 mm

Drainage capacity accumulation height 300 mm 0.92 l/s

Spillway capacity accumulation height 60 mm over mid of spill hole 0,63 l/s

Model	DN	BWL	L	H	SB	BCC	XLB	B52	PU	article
6171.10	40/50	560	100–260	180–400	✓			✓	5	724 566
6171.11	40/50	725	130–370	180–430		✓		✓	10	733 582
6171.12	40/50	1070	100–680	180–480			✓	✓	10	733 599

**Rotaplex drain/overflow functional unit**

flat version; only 33 mm space required behind the bathtub

■ without: rotatable rosette, cover plate

Technical data

Water seal height 50 mm

Drainage capacity accumulation height 300 mm 1.25 l/s

Spillway capacity accumulation height 60 mm over mid of spill hole 0,63 l/s

Model	DN	BWL	L	H	BCC	XLB	B90	PU	article
6142.32	40/50	725	150–400	180–430	✓		✓	10	488 659
6142.33	40/50	1070	150–680	180–480		✓	✓	1	574 956

**Rotaplex equipment set****Visign R5**

■ for drain/overflow functional unit

Version	PU	article
chrome-plated	1	721 558
special colour	1	773 397¹
metallic colour	1	773 403¹
gold-plated	1	773 410¹

¹⁾ Delivery time for customer-individual range: 10 weeks plus shipping;
non-returnable!

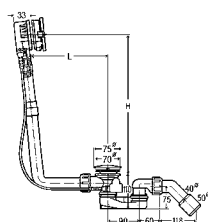
Model 6142.01

**Rotaplex equipment set****Visign R3**

■ for drain/overflow functional unit

Version	PU	article
chrome-plated	1	586 508
special colour	1	773 427¹
metallic colour	1	773 434¹
gold-plated	1	773 441¹

¹⁾ Delivery time for customer-individual range: 10 weeks plus shipping; non-returnable!

Model 6156.0**NEW****Multiplex Trio drain/overflow****Visign MT5**

■ flat version; only 33 mm space required behind the bathtub

■ for water flow through the overflow

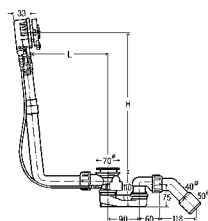
Technical data

Water seal height 50 mm

Drainage capacity accumulation height 300 mm 0.92 l/s

Spillway capacity accumulation height 60 mm over mid of spill hole 0,63 l/s

Model	DN	BWL	L	H	SB	BCC	XLB	B52	PU	article
6161.50	40/50	560	100–260	180–400	✓			✓	1/5	727 734
6161.60	40/50	725	130–370	180–430		✓		✓	1	727 741
6161.70	40/50	1070	100–680	180–480			✓	✓	1	727 758

**Multiplex Trio drain/overflow functional unit**

flat version; only 33 mm space required behind the bathtub

■ for water flow through the overflow

■ without: rotatable rosette, overflow rosette, valve cone

Technical data

Water seal height 50 mm

Drainage capacity accumulation height 300 mm 0.92 l/s

Spillway capacity accumulation height 60 mm over mid of spill hole 0,63 l/s

Model	DN	BWL	L	H	SB	BCC	XLB	B52	PU	article
6161.52	40/50	560	100–260	180–400	✓			✓	10	725 778
6161.62	40/50	725	130–370	180–430		✓		✓	5	727 970
6161.72	40/50	1070	100–680	180–480			✓	✓	10	727 987

**Multiplex Trio equipment set****Visign MT5**

■ for drain/overflow functional unit

■ suitable for Multiplex Trio drain/overflow functional unit model 6161.52, 6161.62, 6161.72

Version	PU	article
chrome-plated	10	725 785
chrome matt	1	732 486
polished brass	1	732 493
stainless steel coloured/brushed	1	732 509
design-white	1	725 815
special colour	1	766 474¹
metallic colour	1	766 481¹
gold-plated	1	766 498¹

¹⁾ Delivery time for customer-individual range: 10 weeks plus shipping; non-returnable!

Model 6161.01

BWL = Bowden wire length – SB = Standard bathtub – BCC = Bathtub central connection – XLB = Extra-long bathtub
B52 = for bathtub with Ø 52 drain hole

**Multiplex Trio equipment set****Visign MT3**

for drain/overflow functional unit

■ suitable for Multiplex Trio drain/overflow functional unit
model 6161.52, 6161.62, 6161.72

Version	PU	article
chrome-plated	10	725 792
design-white	1	725 822
special colour	1	766 504¹⁾
metallic colour	1	766 511¹⁾
gold-plated	1	766 528¹⁾

¹⁾ Delivery time for customer-individual range: 10 weeks plus shipping;
non-returnable!

Model 6161.13**Multiplex Trio equipment set****Visign MT9**

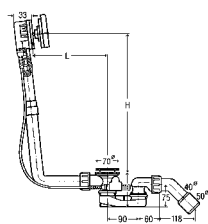
water level increase plus 5 cm

■ for drain/overflow functional unit

■ suitable for Multiplex Trio drain/overflow functional unit
model 6161.52, 6161.62, 6161.72

Version	PU	article
chrome-plated	1	724 580
special colour	1	766 535¹⁾
metallic colour	1	766 542¹⁾
gold-plated	1	766 559¹⁾

¹⁾ Delivery time for customer-individual range: 10 weeks plus shipping;
non-returnable!

Model 6170.0**Multiplex Trio drain/overflow****Visign MT9**

water level increase plus 5 cm

■ for water flow through the overflow

■ flat version; only 33 mm space required behind the bathtub, alternatively increase of the
water level

Technical data

Water seal height 50 mm

Drainage capacity accumulation height 300 mm 0.92 l/s

Spillway capacity accumulation height 60 mm over mid of spill hole 0,63 l/s

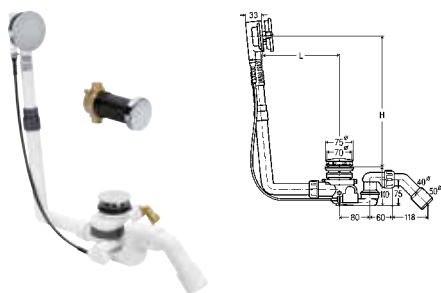
Model	DN	BWL	L	H	SB	BCC	XLB	B52	Version	PU	article
6170.10	40/50	560	100–260	180–400	✓			✓	chrome-plated	5	723 347
6170.11	40/50	725	130–370	180–430		✓		✓	chrome-plated	10	733 605
6170.12	40/50	1070	100–680	180–480			✓	✓	chrome-plated	1	733 612

**Multiplex extension set**

■ for extension of the drain in bathtub with thick bottom

H = 20 PU = 1

article **122 201****Model 6161.7**

**Multiplex Trio F drain/overflow**

flat version; only 33 mm space required behind the bathtub

■ for water flow through the drain unit

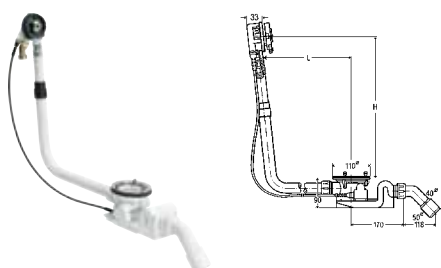
Technical data

Water seal height 50 mm

Drainage capacity accumulation height 300 mm 0.85 l/s

Spillway capacity accumulation height 60 mm over mid of spill hole 0,63 l/s

Model	DN	BWL	L	H	SB	BCC	XLB	PU	article
6145.4	40/50	560	100–260	180–350	✓			1	672 027
6145.5	40/50	725	130–370	180–370		✓		1	675 462
6145.6	40/50	1070	100–680	180–430			✓	1	675 479

**Rotaplex Trio drain/overflow functional unit**

flat version; only 33 mm space required behind the bathtub

■ for water flow through the overflow

■ without: rotatable rosette, cover plate, overflow rosette

Technical data

Water seal height 50 mm

Drainage capacity accumulation height 300 mm 1.25 l/s

Spillway capacity accumulation height 60 mm over mid of spill hole 0,63 l/s

Model	DN	BWL	L	H	BCC	XLB	B90	PU	article
6141.62	40/50	725	150–400	180–430	✓		✓	10	727 949
6141.72	40/50	1070	150–680	180–480		✓	✓	1	727 956

**Rotaplex Trio equipment set****Visign RT5**

■ for drain/overflow functional unit

Version	PU	article
chrome-plated	1	732 530
stainless steel coloured/brushed	1	732 547
design-white	1	732 523
special colour	1	773 113 ¹
metallic colour	1	773 120 ¹
gold-plated	1	773 137 ¹

¹⁾ Delivery time for customer-individual range: 10 weeks plus shipping; non-returnable!

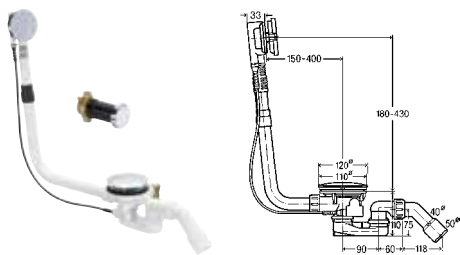
Model 6141.01**Rotaplex Trio equipment set****Visign RT3**

■ for drain/overflow functional unit

Version	PU	article
chrome-plated	1	734 107
special colour	1	773 144 ¹
metallic colour	1	775 056 ¹
gold-plated	1	775 063 ¹

¹⁾ Delivery time for customer-individual range: 10 weeks plus shipping; non-returnable!

Model 6141.02

**Rotaplex Trio F drain/overflow**

flat version; only 33 mm space required behind the bathtub

■ for water flow through the drain unit

Technical data

Water seal height 50 mm

Drainage capacity accumulation height 300 mm 1.25 l/s

Spillway capacity accumulation height 60 mm over mid of spill hole 0,60 l/s

DN = 40/50 BWL = 725 B90 = ✓ PU = 1

article 651 411

Model 6145.1

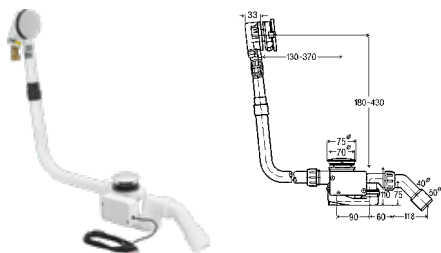
**Rotaplex extension set**

■ for extension of the drain in bathtub with thick bottom

H = 22 PU = 1

article 583 668

Model 6141.7

**Multiplex Trio drain/overflow**

flat version; only 33 mm space required behind the bathtub

■ for water flow through the overflow

■ suitable for Multiplex Trio E fitting model 6146, Multiplex Trio E2 fitting model 6146.2, Multiplex Trio E3 fitting model 6146.215

■ valve cone motor-driven

Technical data

Water seal height 50 mm

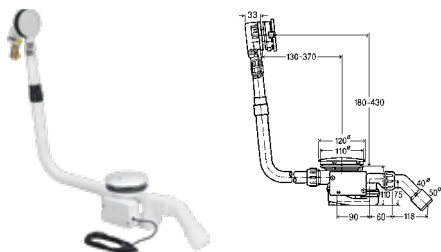
Drainage capacity accumulation height 300 mm 0.92 l/s

Spillway capacity accumulation height 60 mm over mid of spill hole 0,63 l/s

DN = 40/50 BCC = ✓ B52 = ✓ PU = 1

article 731 618

Model 6175.1

**Rotaplex Trio drain/overflow**

flat version; only 33 mm space required behind the bathtub

■ for water flow through the overflow

■ suitable for Multiplex Trio E fitting model 6146, Multiplex Trio E2 fitting model 6146.2, Multiplex Trio E3 fitting model 6146.215

■ valve cone motor-driven

Technical data

Water seal height 50 mm

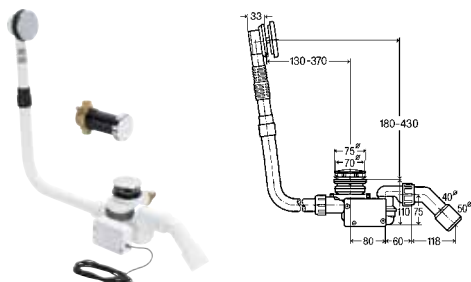
Drainage capacity accumulation height 300 mm 1.25 l/s

Spillway capacity accumulation height 60 mm over mid of spill hole 0,63 l/s

DN = 40/50 BCC = ✓ B90 = ✓ PU = 1

article 731 625

Model 6175.2

**Multiplex Trio F drain/overflow**

for water flow through the drain unit

- suitable for Multiplex Trio E fitting model 6146, Multiplex Trio E2 fitting model 6146.2, Multiplex Trio E3 fitting model 6146.215
- valve cone motor-driven

Technical data

Water seal height 50 mm

Drainage capacity accumulation height 300 mm 0.85 l/s

Spillway capacity accumulation height 60 mm over mid of spill hole 0,63 l/s

DN = 40/50 BCC = ✓ B52 = ✓ PU = 1

article 675 493**Model 6148.1****Rosette****Visign RU2**

- suitable for concealed pipe interrupter model 6161.81, connection set concealed pipe interrupter model 6161.86

	Version	PU	article
	chrome-plated	5	490 690
NEW	design-white	0	800 369

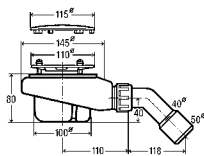
Model 6161.89**Rosette****Visign RU1**

- suitable for concealed pipe interrupter model 6161.81, connection set concealed pipe interrupter model 6161.86

	Version	PU	article
	chrome matt	1	273 514*
	polished brass	1	273 552*
	stainless steel coloured	1	450 168*

* = Discontinued, limited availability

Model 6161.80

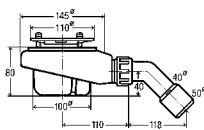


Tempoplex drain

Technical data
Water seal height 50 mm
Drainage capacity accumulation height 15 mm 0.64 l/s
quality controlled in accordance with DIN EN 274

Ø = 115 H = 80 DN = 40/50 D90 = ✓ PU = 1/10

article 575 601 Model 6961



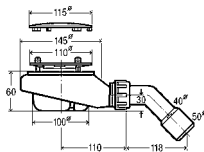
Tempoplex drain

functional unit
■ without: cover plate

Technical data
Water seal height 50 mm
Drainage capacity accumulation height 15 mm 0.64 l/s
quality controlled in accordance with DIN EN 274

DN = 40/50 H = 80 D90 = ✓ PU = 1/10

article 575 625 Model 6961.1

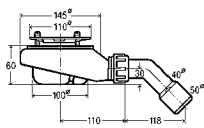


Tempoplex drain

CH 60 mm
Technical data
Water seal height 30 mm
Drainage capacity accumulation height 15 mm 0.55 l/s

Ø = 115 H = 60 DN = 40/50 D90 = ✓ PU = 1/10

article 634 100 Model 6963



Tempoplex drain

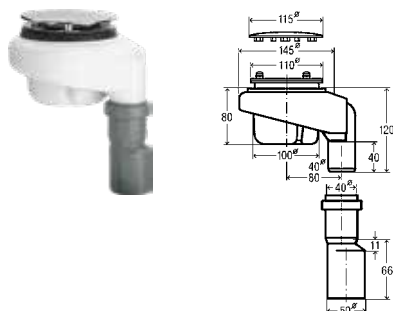
functional unit
CH 60 mm
■ without: cover plate

Technical data
Water seal height 30 mm
Drainage capacity accumulation height 15 mm 0.55 l/s

DN = 40/50 H = 60 D90 = ✓ PU = 1/10

article 634 117 Model 6963.1



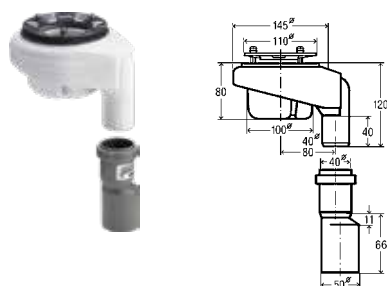
**Tempoplex drain**

Technical data

Water seal height 50 mm

Drainage capacity accumulation height 15 mm 0.64 l/s
quality controlled in accordance with DIN EN 274

Ø = 115 H = 80 DN = 40/50 D90 = ✓ PU = 1

article **576 455****Model 6962****Tempoplex drain**

functional unit

■ without: cover plate

Technical data

Water seal height 50 mm

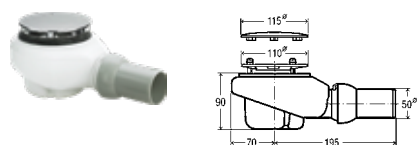
Drainage capacity accumulation height 15 mm 0.64 l/s
quality controlled in accordance with DIN EN 274

DN = 40/50 H = 80 D90 = ✓ PU = 1

article **576 462****Model 6962.1****Tempoplex drain**

■ without: odour trap

Ø = 115 G = 1½ D90 = ✓ PU = 1

article **446 567****Model 6957****Tempoplex Plus drain**

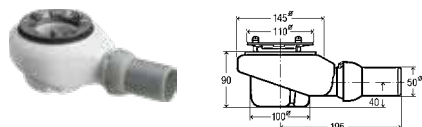
high drainage capacity

Technical data

Water seal height 60 mm

Drainage capacity accumulation height 15 mm 0.85 l/s
drainage capacity according to DIN EN 274

DN = 50 Ø = 115 H = 90 D90 = ✓ PU = 1

article **578 916****Model 6960****Tempoplex Plus drain**

functional unit

high drainage capacity

■ without: cover plate

Technical data

Water seal height 60 mm

Drainage capacity accumulation height 15 mm 0.85 l/s
drainage capacity according to DIN EN 274

DN = 50 H = 90 D90 = ✓ PU = 10

article **559 991****Model 6960.1**

**Cover plate**

■ for functional unit, Tempoplex, Tempoplex Plus, Tempoplex 60 mm

Ø	D90	Version	PU	article
115	✓	chrome-plated	5	649 982
115	✓	special colour	1	775 070¹
115	✓	metallic colour	1	775 087¹
115	✓	gold-plated	1	775 094¹

¹⁾ Delivery time for customer-individual range: 10 weeks plus shipping; non-returnable!

Model 6964.0**Cover plate**

■ for functional unit, Tempoplex, Tempoplex Plus, Tempoplex 60 mm

Ø	D90	Version	PU	article
112	✓	chrome-plated	1	560 003¹
112	✓	chrome matt	1	560 812
112	✓	polished brass	1	560 829*
112	✓	stainless steel coloured/ brushed	1	560 843
112	✓	design-white		560 805

¹⁾ brass cover plate

* = Discontinued, limited availability

Model 6960.0**Sieve insert**

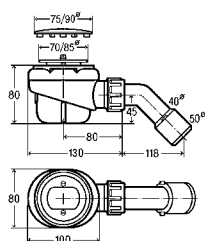
■ for Tempoplex, Tempoplex Plus, Tempoplex 60 mm, series from 2006 onwards

■ not suitable for Tempoplex drain model 6956EX

PU = 1

article 582 951

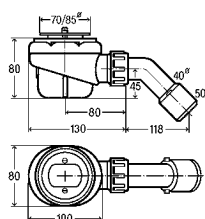
Model 6961.96

**Domoplex drain****Technical data**

Water seal height 50 mm

Drainage capacity accumulation height 120 mm 0.73 l/s
quality controlled in accordance with DIN EN 274

Model	Ø	H	DN	D52	D65	PU	article
6928	75	80	40/50	✓		10	126 582
6929	90	90	40/50		✓	10	208 615

**Domoplex drain****functional unit**

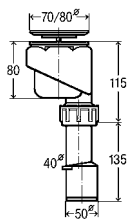
■ without: cover plate

Technical data

Water seal height 50 mm

Drainage capacity accumulation height 120 mm 0.73 l/s
quality controlled in accordance with DIN EN 274

Model	DN	H	D52	D65	PU	article
6928.1	40/50	80	✓		10	130 817
6929.1	40/50	90		✓	1	193 607

**Domoplex drain**

functional unit

■ without: cover plate

Technical data

Water seal height 50 mm

Drainage capacity accumulation height 120 mm 0.6 l/s
quality controlled in accordance with DIN EN 274

Model	DN	H	D52	D65	PU	article
6928.21	40/50	80	✓		1	279 219
6929.21	40/50	90		✓	1	279 226

**Cover plate**

■ for functional unit, Domoplex

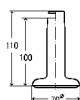
Model	Ø	D52	D65	Version	PU	article
6930.0	75	✓		chrome-plated	10	649 968
6930.0	75	✓		special colour	1	775 100 ¹
6930.0	75	✓		metallic colour	1	775 117 ¹
6930.0	75	✓		gold-plated	1	775 124 ¹
6931.0	90		✓	chrome-plated	1/10	649 975
6931.0	90		✓	special colour	1	775 131 ¹
6931.0	90		✓	metallic colour	1	775 148 ¹
6931.0	90		✓	gold-plated	1	775 155 ¹

¹⁾ Delivery time for customer-individual range: 10 weeks plus shipping; non-returnable!**Cover plate**

for functional unit, Domoplex

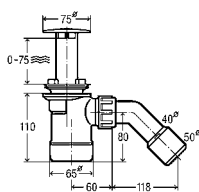
Ø = 75 D52 = ✓ Version = design-white PU = 1

article 140 342 Model 6928.0

**Domoplex standpipe**

D52 = ✓ Version = design-white PU = 1

article 446 642 Model 6928.5

**Duoplex drain**

Technical data

Water seal height 50 mm

Drainage capacity accumulation height 120 mm 0.65 l/s

Ø = 75 WL = 90 DN = 40/50 D52 = ✓ PU = 1

article 327 460 Model 6934

**Duoplex drain**

functional unit

■ without: cover plate

Technical data

Water seal height 50 mm

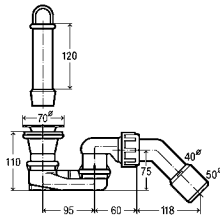
Drainage capacity accumulation height 120 mm 0.65 l/s

DN = 40/50 D52 = ✓ PU = 1

article 334 338**Model 6934.1****Duoplex cover plate standing pipe**

■ for drain

Ø = 75 D52 = ✓ CP = ✓ PU = 1

article 334 390**Model 6934.0****Varioplex drain**

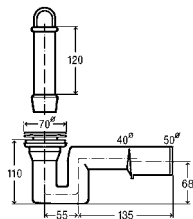
Technical data

Water seal height 50 mm

Drainage capacity accumulation height 120 mm 0.53 l/s

quality controlled in accordance with DIN EN 274

Ø = 70 WL = 120 DN = 40/50 D52 = ✓ PU = 10

article 101 220**Model 6931.45****Drain**

Technical data

Water seal height 50 mm

Drainage capacity accumulation height 120 mm 0.52 l/s

quality controlled in accordance with DIN EN 274

Ø = 70 WL = 120 DN = 40/50 D52 = ✓ PU = 10

article 103 408**Model 6933.89****Standpipe valve**

■ chrome-plated brass

G	Ø	SVL	WL	PU	article
1¼	60	70	120	10	115 784
1¼	70	40	120	10	112 677

Model 44.1**Standpipe valve**

■ chrome-plated brass

G	Ø	SVL	WL	PU	article
1½	70	40	120	25	103 989
1½	70	70	120	10	122 454

Model 45.1



Valve bottom
 ■ for standpipe with brass cone
 ■ chrome-plated brass

G	Ø	SVL	PU	article
2	80	70	1	152 802
1½	70	40	1	129 804

Model 3932-667



Standpipe
 ■ chrome-plated brass

for G	WL	PU	article
1¼	120	1	132 682
1¼	140	1	159 108
1¼	175	1	147 082
1¼	250	1	108 861

Model 44.1-603



Standpipe
 ■ chrome-plated brass

for G	WL	PU	article
1½	120	5	123 864
1½	140	1	142 193
1½	175	1	145 484
1½	200	1	140 045
1½	225	1	148 263
1½	250	1	124 915
1½	275	1	240 554
1½	300	1	208 622
1½	325	1	237 363
1½	350	1	175 108

Model 45.1-603



Valve bottom
 ■ for standpipe valve with rubber or plastic cone
 ■ chrome-plated brass

G	Ø	SVL	PU	article
1¼	60	70	1	109 844
1¼	70	40	1	132 095
1½	70	40	1	116 910
1½	70	70	1	126 605

Model 45-667



Slotted valve
 ■ brass

G	TI	Ø	SVL	Version	PU	article
1½	1¼	70	70	uncoated	1	130 695
2	1½	80	70	uncoated	1	140 359

Model 3932



Slotted valve
 ■ brass

G = 1½	Ø = 70	SVL = 60	Version = chrome-plated	PU = 1
article	128 944			Model 6912



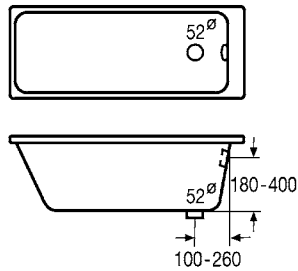
Odour trap
 ■ brass

G	DN	Version	PU	article
1¼	32	uncoated	1	123 765
1½	40	uncoated	1	117 900

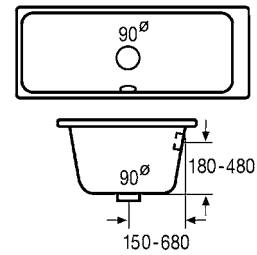
Model 6835.1

Configuration assistant for drain systems

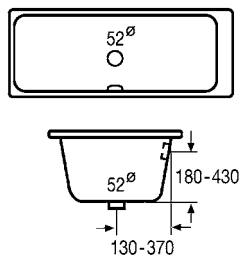
- A** 6145.4; 6161.2; 6161.50; 6161.51; 6161.52 + 6161.01/
6161.13; 6162; 6162.1 + 6162.01/6154.0; 6162.175 +
6162.01/6154.0; 6162.45; 6162.875; 6170.10; 6171.10;
6176; 6176.24; 6176.45



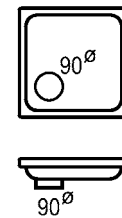
- E** 6142.33 + 6142.01/6156.0; 6141.70; 6141.71; 6141.72
+ 6141.01/6141.02



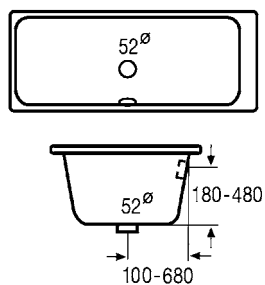
- B** 6145.5; 6145.51; 6148.1; 6161.36; 6161.60; 6161.61;
6161.62 + 6161.01/6161.13; 6163; 6163.1 + 6162.01/
6154.0; 6163.45; 6163.875; 6170.11; 6171.11; 6175.1;
6175.1



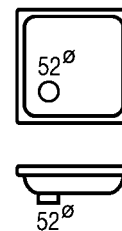
- F** 6957; 6960; 6960.1 + 6960.0/6964.0; 6961; 6961.1 +
6960.0/6964.0; 6961.6; 6961.61 + 6960.0/6964.0;
6961.875; 6962; 6962.1 + 6960.0/6964.0; 6963; 6963 +
6960.0/6964.0; 6963.6



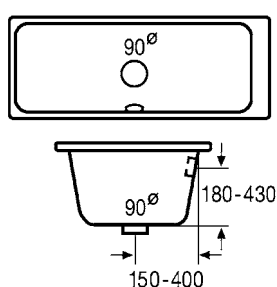
- C** 6145.6; 6161.70; 6161.71; 6161.72 + 6161.01/6161.13;
6163.2 + 6162.01/6154.0; 6170.12; 6171.12



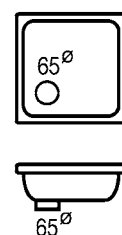
- G** 6928; 6928.1 + 6928.0/6930.0; 6928.175 +
6928.0/6930.0; 6928.21 + 6928.0/6930.0; 6928.9;
6928.95; 6928.175 + 6928.0/6930.0; 6928.9; 6931.45;
6934; 6934.1 + 6934.0



- D** 6142.32 + 6142.01/6156.0; 6141.60; 6141.61; 6141.62
+ 6141.01/6141.02; 6175.2



- H** 6929; 6929.1 + 6931.0; 6929.21 + 6931.0; 6929.29;
6929.95



THE HOTEL BATHROOM – A SPACE FOR ALL THE SENSES.

Colours, materials and shapes are more than just a visual highlight; they are design elements that can create living spaces and theme worlds, making the bathroom an emotional experience. Whether used as an accent, a deliberate break in style or subtle tone-in-tone effect – choosing the right colour or surface is always combined with the overall spatial concept.

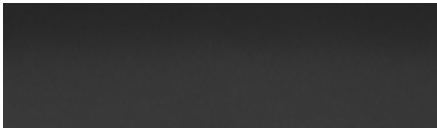
Viega provides a wide range of materials and colour shades to ensure there are no limits to design freedom. From glass and stainless steel to wood, or even to match with tiles; anything is possible. Custom colours and accents in gold, copper or chrome are also available. To make hotel bathrooms a real home – even if just for a while.



Metal, gold-plated on request



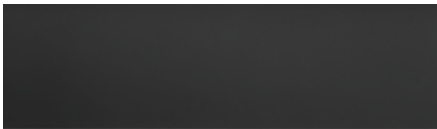
Glass, jet black



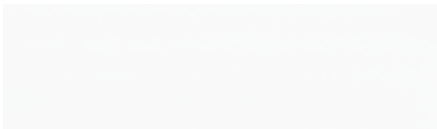
Metal, anthracite



Stainless steel, brushed



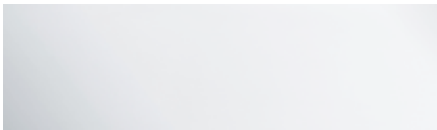
Stainless steel, anthracite



Metal, standard white



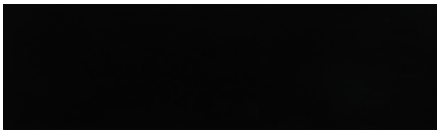
Stainless steel, polished



Plastic, chromed



Acrylic, jet-black/stainless steel colours



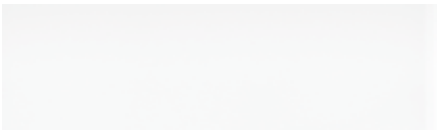
Plastic, jet black



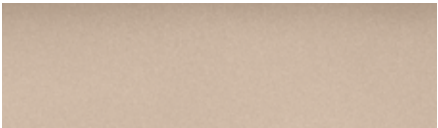
Plastic, gold-plated on request



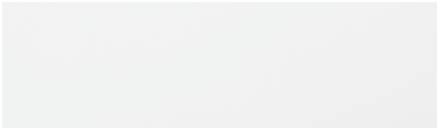
Wood, stained oak



Glass, standard white



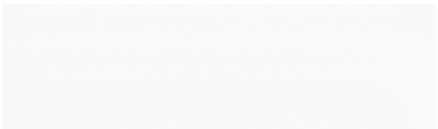
Metallic, gold copper



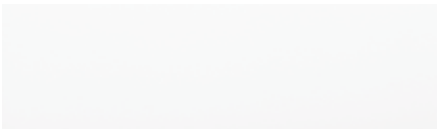
Stainless steel, standard white



Stainless steel, gold-plated on request



Metal, standard white/chromed



Plastic, white-alpine



Plastic, satin matte



Acrylic, jet-black/jet-black matte



Plastic, stainless steel colours



Metallic and custom colours on request

Hygiene, convenience and efficiency

BUILDING FOR THE FUTURE AND ENSURING IT IS SAFE.

Our society is changing at breakneck speed. It is becoming more mobile, more digital, more urban. That means increased demands, yet reduced space. Viega takes this matter into account and is committed to engaging with expertise, new technology and constant innovation to ensure and further develop the foundations for healthy living.

Systematically protecting life and its values

No matter whether in public or private buildings, fire protection that is easy to plan is the basic prerequisite for future-proof buildings and living spaces. Our wide range of fire-protection-tested systems to meet the most demanding requirements enable pipework systems to be laid with zero clearance, and not only meet, but exceed all standards and regulations. To ensure safe and responsible building technology.

Planning intelligent sound insulation

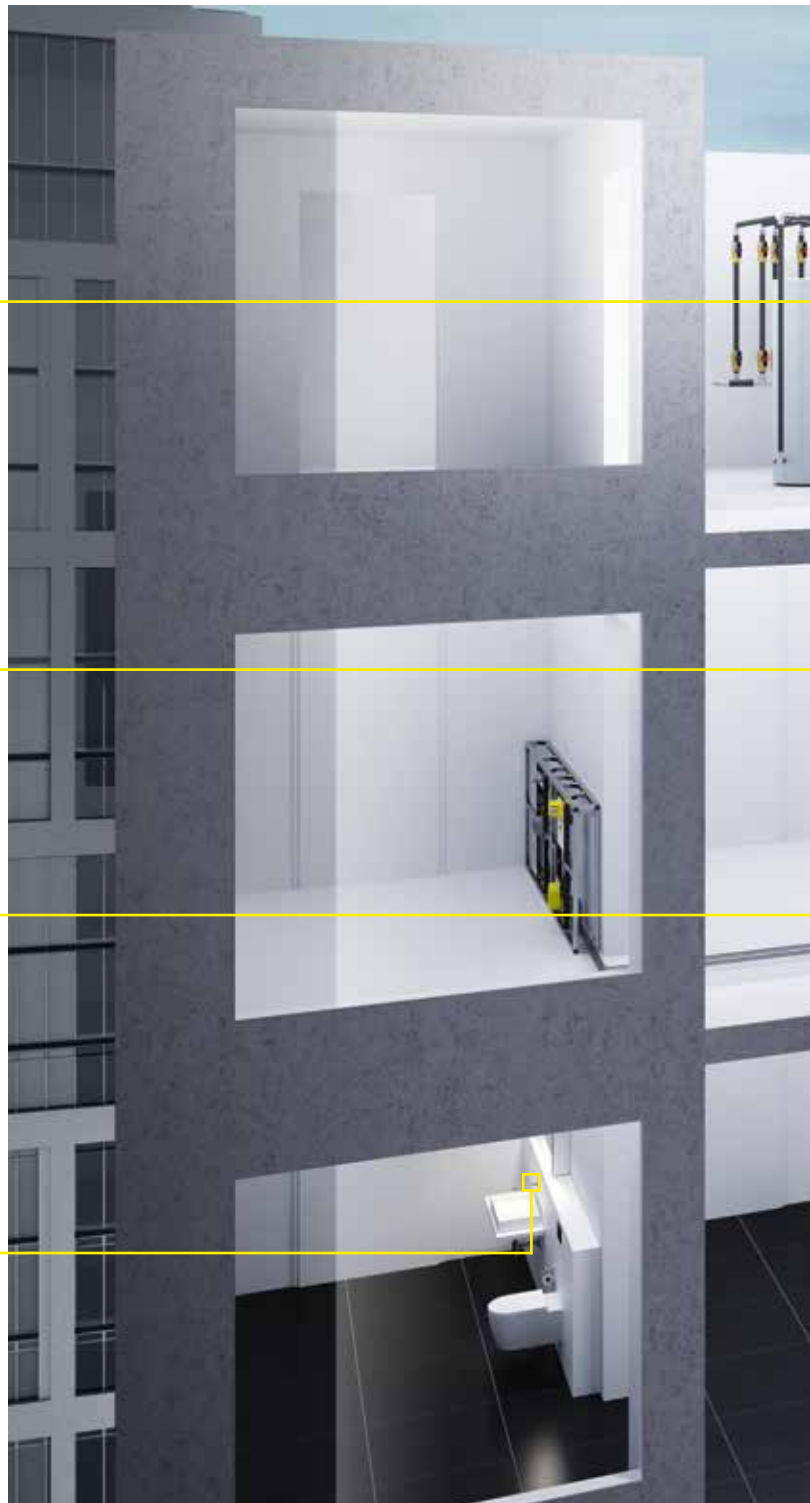
Viega offers comprehensive, tested and effective sound insulation with solutions and systems for all construction-related challenges.

Waste no energy

Energy is a limited resource. For us, managing it responsibly is a matter of course in every aspect. Viega's surface temperature control systems and pipe insulation help construction to be energy efficient and sustainable. At the same time, innovations such as ultrafiltration pave the way for greater use of renewable energies by significantly reducing the hot water temperatures required, while still maintaining hygiene.

Drinking water concerns us all

Drinking water quality is essential to our lives and one of our core areas of expertise. That's why we are constantly working to develop technologies that help operators to maintain drinking water quality.







Viega Ltd

Palmerston House
814 Brighton Road
Purley, Surrey, CR8 2BR
United Kingdom

Phone +44 (0) 330 111 4568

viega.co.uk

